



Smart Solutions for a Changing World



## **ANTENNA CATALOG**

2025 EDITION

# Content

Simple 2G.....	3
Simple 3G.....	5
Combi 2G + GNSS.....	13
Simple 4G/LTE.....	13
Combi 3G + GNSS.....	30
MIMO 4G/LTE .....	30
Combi 3G + GNSS + WiFi.....	33
Combi 4G/LTE + GNSS .....	34
Combi 4G/LTE + GNSS + WiFi .....	39
Combi 4G/LTE + GNSS + WiFi + TETRA .....	41
Simple 5G.....	42
Combi 5G + GNSS.....	44
Combi 5G + WiFi.....	45
Combi 5G + GNSS + WiFi.....	45
MIMO 5G .....	46
Simple GNSS.....	51
Simple GNSS Precision .....	57
Simple WiFi .....	58
MIMO WiFi.....	70
Combi GNSS + WiFi .....	72
Combi GNSS + TETRA .....	72
Simple ISM 169 .....	73
Simple ISM 433 .....	63
Simple ISM 868 .....	77
Simple ISM 915 .....	84
Simple ISM 868 / 915.....	85
Simple RFID .....	76
Simple TETRA.....	88
Simple UHF.....	89
Simple VHF.....	89
RF Adapter Connectors.....	90

## Simple 2G

### Adhesive Blade

#### FEATURES

- Frequency: 900/1800MHz
- Gain: 1dBi
- Connector and cable: different options available (see ordering information)
- Dimensions: 105 x 15 mm



#### ORDERING INFORMATION

<b>118009149</b>	MTX-Antenna Adhesive BLADE 091 GSM2 FME F - RG174 - 3m
<b>118009111</b>	MTX-Antenna Adhesive BLADE 091 GSM2 MMCX M R/A - RG174 - 3m
<b>118009028</b>	MTX-Antenna Adhesive BLADE 091 GSM2 SMA M - RG174 - 3m

## Simple 2G

### Adhesive Blade

#### FEATURES

- Frequency: 800/900/1800/1900MHz
- Gain: 2dBi
- Connector and cable: different options available (see ordering information)
- Dimensions: 115 x 22 mm



#### ORDERING INFORMATION

<b>118007039</b>	MTX-Antenna Adhesive BLADE GSM4 - RG174 - 3m
<b>118007040</b>	MTX-Antenna Adhesive BLADE GSM4 FAKRA D Jack-F - RG174 - 2m
<b>118007006</b>	MTX-Antenna Adhesive BLADE GSM4 MMCX M R/A - RG174 - 3m
<b>118007037</b>	MTX-Antenna Adhesive BLADE GSM4 MMCX M ST - RG174 - 3m
<b>118007024</b>	MTX-Antenna Adhesive BLADE GSM4 SMA M - RG174 - 300 mm
<b>118007015</b>	MTX-Antenna Adhesive BLADE GSM4 SMA M - RG174 - 4m

## Simple 2G

### Magnetic Whip

#### FEATURES

- Frequency: 900/1800MHz
- Gain: 0dBi (6cm) / 2.5dBi (22cm)
- Connector and cable: different options available (see ordering information)
- Dimensions: 6 / 21 cm x ø29 mm



#### ORDERING INFORMATION

<b>118009024</b>	MTX-Antenna Magnetic 22cm GSM2 FME F - RG174 - 3m
<b>118009042</b>	MTX-Antenna Magnetic 22cm GSM2 MMCX M R/A - RG174 - 3m
<b>118009203</b>	MTX-Antenna Magnetic 22cm GSM2 SMA M - RG174 - 300mm
<b>118009046</b>	MTX-Antenna Magnetic 22cm GSM2 SMA M - RG174 - 3m
<b>118009202</b>	MTX-Antenna Magnetic 22cm GSM2 SMA M - RG174 - 5m
<b>118009003</b>	MTX-Antenna Magnetic 6cm GSM2 FME F - RG174 - 3m
<b>118009036</b>	MTX-Antenna Magnetic 6cm GSM2 FME F - RG174 - 900mm

## Simple 2G

### Magnetic Whip

#### FEATURES

- Frequency: 800/900/1800/1900MHz
- Gain: 0dBi
- Connector and cable: different options available (see ordering information)
- Dimensions: 91 x ø40.7 mm



#### ORDERING INFORMATION

<b>118009247</b>	MTX-Antenna Magnetic Whip L09 GSM4 SMA M - RG174 - 3m
<b>118009225</b>	MTX-Antenna Magnetic Whip L09 GSM4 SMA M - RG58 - 3.5m

## Simple 2G

### Magnetic Whip

#### FEATURES

- Frequency: 800 to 1900MHz
- Gain: 5dBi
- Connector and cable: different options available (see ordering information)
- Dimensions: 328 x ø70 mm



#### ORDERING INFORMATION

<b>118009259</b>	MTX-Antenna Magnetic Whip L30 GSM3 5dBi FME F - LL195 - 10m
<b>118009283</b>	MTX-Antenna Magnetic Whip L30 GSM3 5dBi FME F - RG174 - 3m
<b>118009041</b>	MTX-Antenna Magnetic Whip L30 GSM3 5dBi SMA M - RG174 - 3m
<b>118009299</b>	MTX-Antenna Magnetic Whip L30 GSM3 5dBi SMA M - RG174 - 4m

## Simple 2G

### Screwed

#### FEATURES

- Frequency: 850/900/1800/1900MHz
- Gain: 0dBi
- Connector and cable: different options available (see ordering information)
- Dimensions: 23 x ø80 mm



#### ORDERING INFORMATION

<b>118012111</b>	MTX-Antenna Screwed WB20 GSM4 FME F - RG174 - 2m
<b>118012112</b>	MTX-Antenna Screwed WB20 GSM4 SMA M - RG174 - 2m

## Simple 3G

### Adhesive Blade

#### FEATURES

- Frequency: 800/900/1800/1900/2100MHz
- Gain: 2dBi
- Connector and cable: different options available (see ordering information)
- Dimensions: 115.6 x 21.7 x 1 mm



#### ORDERING INFORMATION

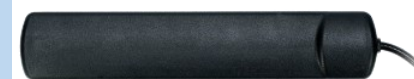
<b>118007003</b>	MTX-Antenna Adhesive BLADE GSM5 FME F - RG174 - 3 m
<b>118014024</b>	MTX-Antenna Adhesive BLADE GSM5 SMA M - RG174 - 1.5m
<b>118014022</b>	MTX-Antenna Adhesive BLADE GSM5 SMA M - RG174 - 150mm
<b>118007002</b>	MTX-Antenna Adhesive BLADE GSM5 SMA M - RG174 - 3 m

## Simple 3G

### Adhesive Blade

#### FEATURES

- Frequency: 800/900/1800/1900/2100MHz
- Gain: 4dBi
- Connector and cable: different options available (see ordering information)
- Dimensions: 126.5 x 22 x 6.7 mm



#### ORDERING INFORMATION

<b>118016168</b>	MTX-Antenna Adhesive BLADE OPN5004 GSM5 4dBi SMA M - RG174 - 800mm
------------------	--

## Simple 3G

### Adhesive Blade Middle

#### FEATURES

- Frequency: 900/1800/2100MHz
- Gain: 2.5dBi
- Connector and cable: different options available (see ordering information)
- Dimensions: 18 x 108 mm



#### ORDERING INFORMATION

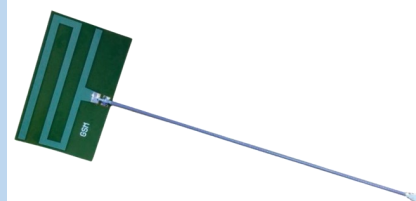
<b>118009047</b>	MTX-Antenna Adhesive BLADEMID GSM3 FME F - RG174 - 2.5m
<b>118009114</b>	MTX-Antenna Adhesive BLADEMID GSM3 SMA M - RG174 - 2.5m

## Simple 3G

Internal

### FEATURES

- Frequency: 800/900/1800/1900/2100MHz
- Gain: 1dBi
- Connector and cable: different options available (see ordering information)
- Dimensions: 24 x 41 mm



### ORDERING INFORMATION

**118009273** MTX-Antenna Internal flex PCB GSM5 U.FL - 100mm

## Simple 3G

Internal PCB

### FEATURES

- Frequency: 800/900/1800/1900/2100MHz
- Gain: 3dBi
- Connector and cable: different options available (see ordering information)
- Dimensions: 27 x 7.92 x 3.2 mm



### ORDERING INFORMATION

**118011025** MTX-Antenna Internal PCB CALVUS GSM5

## Simple 3G

Magnetic Stub

### FEATURES

- Frequency: 800/900/1800/1900/2100MHz
- Gain: 2dBi
- Connector and cable: different options available (see ordering information)
- Dimensions: 70 x ø30 mm



### ORDERING INFORMATION

**118007020** MTX-Antenna Magnetic STUB L07 GSM5 FME F - RG174 - 2.5m  
**118007021** MTX-Antenna Magnetic STUB L07 GSM5 SMA M - RG174 - 2.5m

## Simple 3G

### Magnetic Stub

#### FEATURES

- Frequency: 800/900/1800/1900/2100MHz
- Gain: 2dBi
- Connector and cable: different options available (see ordering information)
- Dimensions: 87 x ø27 mm



#### ORDERING INFORMATION

<b>118012189</b>	MTX-Antenna Magnetic STUB L09 PENTAMAG GSM5 FME F - RG174 - 3m
<b>118012121</b>	MTX-Antenna Magnetic STUB L09 PENTAMAG GSM5 SMA M - RG174 - 3m

## Simple 3G

### Magnetic Stub

#### FEATURES

- Frequency: 900/1800/2100MHz
- Gain: 0dBi
- Connector and cable: different options available (see ordering information)
- Dimensions: 116.6 x ø26,7 mm



#### ORDERING INFORMATION

<b>118009322</b>	MTX-Antenna Magnetic STUB L11 GSM3 MCX M R/A - RG174 - 10m
<b>118009311</b>	MTX-Antenna Magnetic STUB L11 GSM3 MCX M R/A - RG174 - 3m
<b>118009051</b>	MTX-Antenna Magnetic STUB L11 GSM3 SMA M - RG174 - 3m

## Simple 3G

### Magnetic Whip

#### FEATURES

- Frequency: 800/900/1800/1900/2100MHz
- Gain: 3dBi
- Connector and cable: different options available (see ordering information)
- Dimensions: 231 x ø26.7 mm



#### ORDERING INFORMATION

<b>118009097</b>	MTX-Antenna Magnetic Whip L20 GSM5 3dBi FME F - RG174 - 200mm
<b>118009034</b>	MTX-Antenna Magnetic Whip L20 GSM5 3dBi FME F - RG174 - 3m
<b>118009215</b>	MTX-Antenna Magnetic Whip L20 GSM5 3dBi MMCX M R/A - RG174 - 3m
<b>118009140</b>	MTX-Antenna Magnetic Whip L20 GSM5 3dBi SMA M - RG174 - 3m

## Simple 3G

### Magnetic Whip

#### FEATURES

- Frequency: 800/900/1800/1900/2100MHz
- Gain: 6dBi
- Connector and cable: different options available (see ordering information)
- Dimensions: 330.4 x ø40.7 mm



#### ORDERING INFORMATION

**118009307** MTX-Antenna Magnetic Whip L30 GSM5 5dBi SMAM - RG58 - 20m

## Simple 3G

### Omni Fiberglass - outdoor

#### FEATURES

- Frequency: 800/900/1800/1900/2100MHz
- Gain: 7dBi
- Connector and cable: different options available (see ordering information)
- Dimensions: 756 x ø2.2 mm



#### ORDERING INFORMATION

**118009258** MTX-Antenna Omni FIBERGLASS GSM5 7dBi N F  
**118009068** MTX-Antenna Omni FIBERGLASS GSM5 7dBi N F + FME F - N M - LL195 - 5m  
**118009194** MTX-Antenna Omni FIBERGLASS GSM5 7dBi N F + SMA M - N M - LL195 - 10m  
**118009131** MTX-Antenna Omni FIBERGLASS GSM5 7dBi N F + SMA M - N M - LL195 - 5m

## Simple 3G

### Screwed

#### FEATURES

- Frequency: 800/900/1800/1900/2100MHz
- Gain: 3dBi
- Connector and cable: different options available (see ordering information)
- Dimensions: 102 x ø33.5 mm



#### ORDERING INFORMATION

**118012171** MTX-Antenna Screwed CPO GSM5 FME F - RG174 - 2m  
**118012191** MTX-Antenna Screwed CPO GSM5 FME F - RG174 - 3m  
**118012324** MTX-Antenna Screwed CPO GSM5 SMA M - RG174 - 1m  
**118012142** MTX-Antenna Screwed CPO GSM5 SMA M - RG174 - 2.5m  
**118012113** MTX-Antenna Screwed CPO GSM5 SMA M - RG174 - 2m  
**118012176** MTX-Antenna Screwed CPO GSM5 SMA M - RG174 - 3m  
**118012162** MTX-Antenna Screwed CPO GSM5 SMA M R/A - RG174 - 2m



## Simple 3G

Screwed Esfera

### FEATURES

- Frequency: 800/900/1800/1900/2100MHz
- Gain: 0dBi
- Connector and cable: different options available (see ordering information)
- Dimensions: 23.3 x ø52.7 mm



### ORDERING INFORMATION

<b>118009170</b>	MTX-Antenna Screwed ESFERA GSM5 - RG174 - 200mm
<b>118009169</b>	MTX-Antenna Screwed ESFERA GSM5 FME F - RG174 - 2m
<b>118009302</b>	MTX-Antenna Screwed ESFERA GSM5 FME F - RG174 - 3m
<b>118009261</b>	MTX-Antenna Screwed ESFERA GSM5 SMA M - RG174 - 200mm
<b>118009153</b>	MTX-Antenna Screwed ESFERA GSM5 SMA M - RG174 - 2m
<b>118009219</b>	MTX-Antenna Screwed ESFERA GSM5 SMA M - RG174 - 600mm
<b>118009173</b>	MTX-Antenna Screwed ESFERA GSM5 SMA M - RG174 - 8m

## Simple 3G

Screwed Esfera

### FEATURES

- Frequency: 800/900/1800/1900/2100MHz
- Gain: 0dBi
- Connector and cable: different options available (see ordering information)
- Dimensions: 24.6 x ø54.4 mm



### ORDERING INFORMATION

<b>118009231</b>	MTX-Antenna Screwed ESFERA IP67 GSM5 - RG174 - 200mm
<b>118009308</b>	MTX-Antenna Screwed ESFERA IP67 GSM5 SMA M - RG174 - 2m
<b>118009271</b>	MTX-Antenna Screwed ESFERA IP67 GSM5 U.FL 1.37 - 500mm

## Simple 3G

Screwed

### FEATURES

- Frequency: 800/900/1800/1900/2100MHz
- Gain: 2.14dBi
- Connector and cable: different options available (see ordering information)
- Dimensions: 80.5 x 75.5 x 22.3 mm



### ORDERING INFORMATION

<b>118016039</b>	MTX-Antenna screwed OPN6004B GSM5 - SMA M - 2.5m
<b>118016154</b>	MTX-Antenna screwed OPN6004B TH19 GSM5 SMA M - RG174 - 2.5m

## Simple 3G

Screwed

### FEATURES

- Frequency: 800/900/1800/1900/2100MHz
- Gain: 2.8dBi
- Connector and cable: different options available (see ordering information)
- Dimensions: 15 x ø77.3 mm



### ORDERING INFORMATION

**118016075** MTX-Antenna Screwed OPN664 IP67 GSM5 SMA M - RG174 - 2m

## Simple 3G

Screwed RoofBall

### FEATURES

- Frequency: 900/1800/2100MHz
- Gain: 0dBi
- Connector and cable: different options available (see ordering information)
- Dimensions: 30 x ø52 mm



### ORDERING INFORMATION

**118009045** MTX-Antenna Screwed ROOFBALL GSM3 FME F - RG174 - 5m  
**118009049** MTX-Antenna Screwed ROOFBALL GSM3 SMA M - RG174 - 5m

## Simple 3G

Stub

### FEATURES

- Frequency: 800/900/1800/1900/2100MHz
- Gain: 2dBi
- Connector and cable: different options available (see ordering information)
- Dimensions: 58.9 x ø9 mm



### ORDERING INFORMATION

**118007013** MTX-Antenna STUB GSM5 FME F  
**118007032** MTX-Antenna STUB GSM5 SMA M

## Simple 3G

Stub

### FEATURES

- Frequency: 800/900/1800/1900/2100MHz
- Gain: 0dBi
- Connector and cable: different options available (see ordering information)
- Dimensions: 50 x ø9 mm



### ORDERING INFORMATION

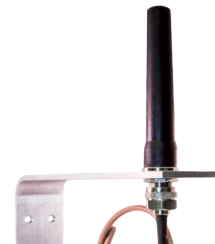
**118014025** MTX-Antenna STUB L05 GSM5 SMA M

## Simple 3G

Stub Screwed

### FEATURES

- Frequency: 800/900/1800/1900/2100MHz
- Gain: 2dBi
- Connector and cable: different options available (see ordering information)
- Dimensions: 116 mm



### ORDERING INFORMATION

**118012377** MTX-Antenna STUB Screwed WCO GSM5 SMA M - RG240 - 12m

## Simple 3G

Stub

### FEATURES

- Frequency: 900/1800/1900/2100MHz
- Gain: 3dBi
- Connector and cable: different options available (see ordering information)
- Dimensions: 87 x 37.9 mm



### ORDERING INFORMATION

**118009159** MTX-Antenna STUBSW GSM3 FME F  
**118009160** MTX-Antenna STUBSW GSM3 SMA M

## Simple 3G

Stub

### FEATURES

- Frequency: 800/900/1800/1900/2100MHz
- Gain: 3dBi
- Connector and cable: different options available (see ordering information)
- Dimensions: 170 mm



### ORDERING INFORMATION

**118009127** MTX-Antenna STUBSW GSM5 FME F  
**118009126** MTX-Antenna STUBSW GSM5 SMA M

## Simple 3G

Stub

### FEATURES

- Frequency: 800/900/1800/1900/2100MHz
- Gain: 1.5dBi
- Connector and cable: different options available (see ordering information)
- Dimensions: 171 x 18 mm



### ORDERING INFORMATION

**118012114** MTX-Antenna STUBSW PTR2100 GSM5 SMA M

## Simple 3G

Yagi

### FEATURES

- Frequency: 800/900/1800/1900/2100MHz
- Gain: 10dBi
- Connector and cable: different options available (see ordering information)
- Dimensions: 540 x200 mm



### ORDERING INFORMATION

**118009264** MTX-Antenna YAGI GSM5 10dBi SMA M - 150mm  
**118009137** MTX-Antenna YAGI GSM5 10dBi SMA M + Cable SMA F BH - FME F - LL195 - 10m  
**118009129** MTX-Antenna YAGI GSM5 10dBi SMA M + Cable SMA M - SMA F BH - LL195 - 10m

## Simple 3G

Omni Fiberglass - outdoor

### FEATURES

- Frequency: 800/900/1800/1900/2100MHz + 868 - 915MHz
- Gain: 2.15dBi
- Connector and cable: different options available (see ordering information)
- Dimensions: 25 x ø2.2 mm



### ORDERING INFORMATION

<b>600005016</b>	MTX-Antenna Omni FIBERGLASS SO GSM5/LoRa 868/915MHz 2.15dBi N F
<b>600005022</b>	MTX-Antenna Omni FIBERGLASS SO GSM5/LoRa 868/915MHz 2.15dBi N M - NoBrackett
<b>600005017</b>	MTX-Antenna Omni FIBERGLASS SO GSM5/LoRa 868/915MHz 2.15dBi SMA M - RF100- 5m

## Combi 2G + GNSS

Screwed Shark

### FEATURES

- Frequency: 900/1800MHz + (GPS)1575,42MHz
- Gain: (2G)0dBi; (GNSS)27dB
- Connector and cable: different options available (see ordering information)
- Dimensions: 69.5 x 56 mm



### ORDERING INFORMATION

<b>118009023</b>	MTX-Antenna Screwed SHARK (GSM2 FME F) + (GPS SMA M) - RG174 - 200mm
------------------	--

## Simple 4G/LTE

Adhesive Blade

### FEATURES

- Frequency: 700/800/850/900/1700(AWS)/1800/1900/2100/2600MHz
- Gain: 2dBi
- Connector and cable: different options available (see ordering information)
- Dimensions: 104.6 x 5 mm



### ORDERING INFORMATION

<b>118006105</b>	MTX-Antenna Adhesive Blade GSM5+LTE700/2700 2dBi SMA M - RG174 - 3m
------------------	---

## Simple 4G/LTE

### Adhesive Blade

#### FEATURES

- Frequency: 700/800/850/900/1700(AWS)/1800/1900/2100/2600MHz
- Gain: 4dBi
- Connector and cable: different options available (see ordering information)
- Dimensions: 116 x 22 x 6.7 mm



#### ORDERING INFORMATION

<b>118016226</b>	MTX-Antenna Adhesive BLADE OPN5024 GSM5+LTE700/2600 4dBi MMCX - RG174 - 3m
<b>118016169</b>	MTX-Antenna Adhesive BLADE OPN5024 GSM5+LTE700/2600 4dBi SMA M - RG174 -800mm

## Simple 4G/LTE

### Adhesive Blade Middle

#### FEATURES

- Frequency: 700/800/850/900/1700(AWS)/1800/1900/2100/2600MHz
- Gain: 3dBi
- Connector and cable: different options available (see ordering information)
- Dimensions: 117.4 x 12.5 x 6.5 mm



#### ORDERING INFORMATION

<b>118016094</b>	MTX-Antenna Adhesive BLADEMID OPN5224 GSM5+LTE700/2600 SMA M - RG174 - 2.5m
<b>118016098</b>	MTX-Antenna Adhesive BLADEMID OPN5224 GSM5+LTE700/2600 SMA M R/A - RG174 -140mm

## Simple 4G/LTE

### Internal Adhesive Flexible

#### FEATURES

- Frequency: 700/800/850/900/1700(AWS)/1800/1900/2100/2600MHz
- Gain: 1.8dBi
- Connector and cable: different options available (see ordering information)
- Dimensions: 40 x 7 x 0.15 mm



#### ORDERING INFORMATION

<b>118016204</b>	MTX-Antenna Internal Adhesive OPNF0224 GSM5+LTE700/2700 0.1/1.4/1.8dBi U.FL 1.37 - 100mm
------------------	--

## Simple 4G/LTE

Internal Adhesive Flexible

### FEATURES

- Frequency: 700/800/850/900/1700(AWS)/1800/1900/2100/2600MHz
- Gain: 3.4dBi
- Connector and cable: different options available (see ordering information)
- Dimensions: 110.4 x 20.8 x 0.2 mm



### ORDERING INFORMATION

<b>118016241</b>	MTX-Antenna Internal Adhesive OPNF0624 GSM5+LTE700/2600 1//3.4//2.5dBi MMCX M 1.37 - 100mm
<b>118016244</b>	MTX-Antenna Internal Adhesive OPNF0624 GSM5+LTE700/2600 1//3.4//2.5dBi MMCX M R/A 1.37 - 100mm
<b>118016115</b>	MTX-Antenna Internal Adhesive OPNF0624 GSM5+LTE700/2600 1//3.4//2.5dBi U.FL 1.37 - 100mm

## Simple 4G/LTE

Internal Adhesive Flexible

### FEATURES

- Frequency: 700/800/850/900/1700(AWS)/1800/1900/2100/2600MHz
- Gain: 3.5dBi
- Connector and cable: different options available (see ordering information)
- Dimensions: 136 x 32.6 x 0.2 mm



### ORDERING INFORMATION

<b>118016116</b>	MTX-Antenna Internal Adhesive OPNP0424P GSM5+LTE700/2600 5.6dBi U.FL 1.37 - 100mm
------------------	---

## Simple 4G/LTE

Internal Adhesive Rigid

### FEATURES

- Frequency: 700/800/850/900/1700(AWS)/1800/1900/2100/2600MHz
- Gain: 2.8dBi
- Connector and cable: different options available (see ordering information)
- Dimensions: 89.7 x 14.1 x 0.8 mm



### ORDERING INFORMATION

<b>118016196</b>	MTX-Antenna Internal Adhesive Rigid OPNP0624 GSM5+LTE700/2700 0.3/1.5/2.8dBi U.FL1.37 - 150mm
------------------	---

## Simple 4G/LTE

Internal PCB

### FEATURES

- Frequency: 700/800/850/900/1700(AWS)/1800/1900/2100/2600MHz
- Gain: 3.6dBi
- Connector and cable: different options available (see ordering information)
- Dimensions: 28 x 8 x 3.3 mm



### ORDERING INFORMATION

**118011046** MTX-Antenna Internal PCB GSM5+LTE700/2700 1,5dBi 28X8X3mm - SR4L034-R

## Simple 4G/LTE

Internal PCB

### FEATURES

- Frequency: 700/800/850/900/1700(AWS)/1800/1900/2100/2600MHz
- Gain: 3.5dBi
- Connector and cable: different options available (see ordering information)
- Dimensions: 28 x 8 x 3.3 mm



### ORDERING INFORMATION

**118011045** MTX-Antenna Internal PCB INTEGRA Left GSM5+LTE790/2700 23X8X3.3 - SR4L049-L

## Simple 4G/LTE

Internal PCB

### FEATURES

- Frequency: 700/800/850/900/1700(AWS)/1800/1900/2100/2600MHz
- Gain: 2.5dBi
- Connector and cable: different options available (see ordering information)
- Dimensions: 35 x 8.5 x 3.2 mm



### ORDERING INFORMATION

**118011031** MTX-Antenna Internal PCB LUCIDA GSM5+LTE700/2700 35X8.5X3.2



## Simple 4G/LTE

### Magnetic Stub

#### FEATURES

- Frequency: 700/800/850/900/1700(AWS)/1800/1900/2100/2600MHz
- Gain: 2-4dBi
- Connector and cable: different options available (see ordering information)
- Dimensions: 110 x ø30mm



#### ORDERING INFORMATION

**118012355** MTX-Antenna Magnetic STUB L11 L-MAG GSM5+LTE700/2600 2-4dBi SMA M - RG174 - 3m

## Simple 4G/LTE

### Magnetic Stub

#### FEATURES

- Frequency: 700/800/850/900/1700(AWS)/1800/1900/2100/2600MHz
- Gain: 2dBic
- Connector and cable: different options available (see ordering information)
- Dimensions: 121 x ø29.4 mm



#### ORDERING INFORMATION

**118006127** MTX-Antenna Magnetic STUB L12 GSM5+LTE700/2700 2dBi FME F - RG174 - 3m  
**118006121** MTX-Antenna Magnetic STUB L12 GSM5+LTE700/2700 2dBi MMCX M R/A - RG174 - 2m  
**118006104** MTX-Antenna Magnetic STUB L12 GSM5+LTE700/2700 2dBi SMA M - RG174 - 3m  
**118006128** MTX-Antenna Magnetic STUB L12 GSM5+LTE700/2700 2dBi SMA M R/A - RG174 - 3m

## Simple 4G/LTE

### Magnetic Stub

#### FEATURES

- Frequency: 700/800/850/900/1700(AWS)/1800/1900/2100/2600MHz
- Gain: 3dBi
- Connector and cable: different options available (see ordering information)
- Dimensions: 89 x ø29 mm



#### ORDERING INFORMATION

**118009296** MTX-Antenna Magnetic STUB L9 GSM5+LTE 3dBi SMA M - RG174 - 2m  
**118009347** MTX-Antenna Magnetic STUB L9 GSM5+LTE 3dBi SMA M - RG174 - 3m  
**118009353** MTX-Antenna Magnetic STUB L9 GSM5+LTE 3dBi SMA M - RG174 - 5m

## Simple 4G/LTE

### Magnetic Whip

#### FEATURES

- Frequency: 700/800/850/900/1700(AWS)/1800/1900/2100/2600MHz
- Gain: 3dBi
- Connector and cable: different options available (see ordering information)
- Dimensions: 306.7 x ø30 mm



#### ORDERING INFORMATION

**118006130** MTX-Antenna Magnetic Whip L30 GSM5+LTE700/2700 3dBi SMA M - LL195 - 2m  
**118009368** MTX-Antenna Magnetic Whip L30 GSM5+LTE700/2700 3dBi SMA M - RG174 - 1m

## Simple 4G/LTE

### Magnetic Whip

#### FEATURES

- Frequency: 700/800/850/900/1700(AWS)/1800/1900/2100/2600MHz
- Gain: 5dBi
- Connector and cable: different options available (see ordering information)
- Dimensions: 325.4 x ø40.7



#### ORDERING INFORMATION

**118009348** MTX-Antenna Magnetic Whip L33 GSM5+LTE700/2600 5dBi SMA M - LL195 - 10m  
**118009287** MTX-Antenna Magnetic Whip L33 GSM5+LTE700/2600 5dBi SMA M - LL195 - 3m

## Simple 4G/LTE

### Magnetic Whip

#### FEATURES

- Frequency: 700/800/850/900/1700(AWS)/1800/1900/2100/2600MHz
- Gain: 7dBi
- Connector and cable: different options available (see ordering information)
- Dimensions: 432 x ø81.1 mm



#### ORDERING INFORMATION

**118009325** MTX-Antenna Magnetic Whip L40 GSM5+LTE700/2700 7dBi SMA M - LL195 - 3m

## Simple 4G/LTE

### Magnetic Whip

#### FEATURES

- Frequency: 800/900/1800/1900/2100/2600MHz
- Gain: 5dBi
- Connector and cable: different options available (see ordering information)
- Dimensions: 519 x ø70 mm



#### ORDERING INFORMATION

<b>118009255</b>	MTX-Antenna Magnetic Whip L50 GSM5 7dBi FME F - RG174 - 3m
<b>118009243</b>	MTX-Antenna Magnetic Whip L50 GSM5 7dBi FME F - RG58U - 5m
<b>118009212</b>	MTX-Antenna Magnetic Whip L50 GSM5 7dBi SMA M - RG174 - 3m
<b>118009226</b>	MTX-Antenna Magnetic Whip L50 GSM5 7dBi SMA M - RG58 - 5m

## Simple 4G/LTE

### Omni Fiberglass - outdoor

#### FEATURES

- Frequency: 700/800/850/900/1700(AWS)/1800/1900/2100/2600MHz
- Gain: 8dBi
- Connector and cable: different options available (see ordering information)
- Dimensions: 756 x ø34 mm



#### ORDERING INFORMATION

<b>118009352</b>	MTX-Antenna Omni Fiberglass EM GSM5+LTE700/2700 8dBi SMA M -LL195 - 10m
<b>118009362</b>	MTX-Antenna Omni Fiberglass EM GSM5+LTE700/2700 8dBi SMA M -LL195 - 5m

## Simple 4G/LTE

### Omni - outdoor

#### FEATURES

- Frequency: 700/800/850/900/1700(AWS)/1800/1900/2100/2600MHz
- Gain: 7dBi
- Connector and cable: different options available (see ordering information)
- Dimensions: 560 x ø75 mm



#### ORDERING INFORMATION

<b>118010101</b>	MTX-Antenna Omni Marine-291 GSM5+LTE452/2700+2.4GHz 7dBi N F
------------------	--

## Simple 4G/LTE

Omni - outdoor

### FEATURES

- Frequency: 700/800/850/900/1700(AWS)/1800/1900/2100/2600MHz
- Gain: 6dBi
- Connector and cable: different options available (see ordering information)
- Dimensions: 550 x ø50 mm



### ORDERING INFORMATION

**118010102** MTX-Antenna Omni-121 GSM5+LTE700/2700 6dBi SMA M - LL195 - 8m

## Simple 4G/LTE

Omni - outdoor

### FEATURES

- Frequency: 700/800/850/900/1700(AWS)/1800/1900/2100/2600MHz
- Gain: 4dBi
- Connector and cable: different options available (see ordering information)
- Dimensions: 154 x 51 mm



### ORDERING INFORMATION

**118010112** MTX-Antenna Omni-280 GSM5+LTE700/2700+2.4GHz 4dBi SMA M - LL195 - 1m

## Simple 4G/LTE

Omni - outdoor

### FEATURES

- Frequency: 700/800/850/900/1700(AWS)/1800/1900/2100/2600MHz
- Gain: 8dBi
- Connector and cable: different options available (see ordering information)
- Dimensions: 646 x 71 mm



### ORDERING INFORMATION

**118010126** MTX-Antenna Omni-292 LoRa/GSM5+LTE617/2700+2.4GHz 8dBi N F

## Simple 4G/LTE

Omni Fiberglass - outdoor

### FEATURES

- Frequency: 700/800/850/900/1700(AWS)/1800/1900/2100/2600MHz
- Gain: 4dBi
- Connector and cable: different options available (see ordering information)
- Dimensions: 300 x ø35 mm



### ORDERING INFORMATION

**600005019** MTX-Antenna OmniFIBERGLASS SO GSM5+LTE700/2600MHZ 4dBi N F  
**600005024** MTX-Antenna OmniFIBERGLASS SO GSM5+LTE700/2600MHZ 4dBi SMA M - RF100 - 5m

## Simple 4G/LTE

Panel

### FEATURES

- Frequency: 700/800/850/900/1700(AWS)/1800/1900/2100/2600MHz
- Gain: 7/8dBi
- Connector and cable: different options available (see ordering information)
- Dimensions: 210 x 180 x 43 mm



### ORDERING INFORMATION

**118009235** MTX-Antenna PANEL BROADBAND GSM5+LTE700/2600 7/8dBi N F

## Simple 4G/LTE

Panel

### FEATURES

- Frequency: 700/800/850/900/1700(AWS)/1800/1900/2100/2600MHz
- Gain: 6/8/9dBi
- Connector and cable: different options available (see ordering information)
- Dimensions: 255 x 135 x 46 mm



### ORDERING INFORMATION

**600005006** MTX-Antenna PANEL COMP GSM5+LTE+2.4GHz 6/9/8dBi FME F - LL195 - 5m  
**600005020** MTX-Antenna PANEL COMP GSM5+LTE+2.4GHz 6/9/8dBi SMA M - LL195 - 5m

## Simple 4G/LTE

Screwed Button

### FEATURES

- Frequency: 700/800/850/900/1700(AWS)/1800/1900/2100/2600MHz
- Gain: 4.3dBi
- Connector and cable: different options available (see ordering information)
- Dimensions: 27.5 x ø62.7 mm



### ORDERING INFORMATION

**118012415** MTX-Antenna Screwed Button GSM5+LTE700/2700 4.3dBi SMA M - RG174 - 2m

## Simple 4G/LTE

Screwed

### FEATURES

- Frequency: 700/800/850/900/1700(AWS)/1800/1900/2100/2600MHz
- Gain: 3.7dBi
- Connector and cable: different options available (see ordering information)
- Dimensions: 33.5 x ø106 mm



### ORDERING INFORMATION

**118012426** MTX-Antenna Screwed CLO GSM5+LTE700/2600 3.7dBi SMA M - RG174 - 2m

**118012392** MTX-Antenna Screwed CLO GSM5+LTE700/2600 3.7dBi SMA M R/A - RG174 - 2m

## Simple 4G/LTE

Screwed

### FEATURES

- Frequency: 700/800/850/900/1700(AWS)/1800/1900/2100/2600MHz
- Gain: 3.8dBi
- Connector and cable: different options available (see ordering information)
- Dimensions: 258 x 13 x 34 mm



### ORDERING INFORMATION

**118010115** MTX-Antenna Screwed DASH-1 GSM5+LTE700/2700 4dBi SMA M - RG174 - 1m

## Simple 4G/LTE

Screwed Esfera

### FEATURES

- Frequency: 700/800/850/900/1700(AWS)/1800/1900/2100/2600MHz
- Gain: 0-3dBi
- Connector and cable: different options available (see ordering information)
- Dimensions: 24.6 x ø54.4 mm



### ORDERING INFORMATION

**118009331** MTX-Antenna Screwed ESFERA IP67 GSM5+LTE700/2700 0-3dBi SMA M - RG174 - 2m  
**118009337** MTX-Antenna Screwed ESFERA IP67 GSM5+LTE700/2700 0-3dBi SMA M - RG174 - 3m  
**118009319** MTX-Antenna Screwed ESFERA IP67 GSM5+LTE700/2700 0-3dBi U.FL 1.37 - 500mm

## Simple 4G/LTE

Screwed

### FEATURES

- Frequency: 700/800/850/900/1700(AWS)/1800/1900/2100/2600MHz
- Gain: 4dBi
- Connector and cable: different options available (see ordering information)
- Dimensions: 26 x ø100 mm



### ORDERING INFORMATION

**118009304** MTX-Antenna Screwed GSM5+LTE700/2600 0-4dBi SMA M - RG174 - 2m

## Simple 4G/LTE

Screwed

### FEATURES

- Frequency: 700/800/850/900/1700(AWS)/1800/1900/2100/2600MHz
- Gain: 2.5dBi
- Connector and cable: different options available (see ordering information)
- Dimensions: 14.5 x ø46.6 mm



### ORDERING INFORMATION

**118006124** MTX-Antenna Screwed J03 GSM5+LTE700/2600 2.5dBi SMA M - RG174 - 2m

## Simple 4G/LTE

Screwed

### FEATURES

- Frequency: 700/800/850/900/1700(AWS)/1800/1900/2100/2600MHz
- Gain: 4.4dBi
- Connector and cable: different options available (see ordering information)
- Dimensions: 80 x 74 x 14.7 mm



### ORDERING INFORMATION

**118016139** MTX-Antenna screwed OPN6024B GSM5+LTE700/2600 - SMA M - 2m

## Simple 4G/LTE

Screwed

### FEATURES

- Frequency: 700/800/850/900/1700(AWS)/1800/1900/2100/2600MHz
- Gain: 4dBi
- Connector and cable: different options available (see ordering information)
- Dimensions: 65.5 x ø77.3 mm



### ORDERING INFORMATION

**118016102** MTX-Antenna Screwed OPN6A24 GSM5+LTE700/2600 FME F - LMR100 - 5m

## Simple 4G/LTE

Screwed

### FEATURES

- Frequency: 700/800/850/900/1700(AWS)/1800/1900/2100/2600MHz
- Gain: 4dBi
- Connector and cable: different options available (see ordering information)
- Dimensions: 69 x ø60 mm



### ORDERING INFORMATION

**118016170** MTX-Antenna screwed OPN7724 GSM5+LTE700/2600 4dBi SMA M - LL100 - 2m



## Simple 4G/LTE

Stub

### FEATURES

- Frequency: 700/800/850/900/1700(AWS)/1800/1900/2100/2600MHz
- Gain: 3dBi
- Connector and cable: different options available (see ordering information)
- Dimensions: 50 x ø9.3 mm



### ORDERING INFORMATION

**118006133** MTX-Antenna STUB GSM5+LTE 3dBi SMA M

## Simple 4G/LTE

Stub

### FEATURES

- Frequency: 700/800/850/900/1700(AWS)/1800/1900/2100/2600MHz
- Gain: 3dBi
- Connector and cable: different options available (see ordering information)
- Dimensions: 4.7 x 1.7 mm



### ORDERING INFORMATION

**118006129** MTX-Antenna STUB GSM5+LTE SMA M R/A

## Simple 4G/LTE

Stub

### FEATURES

- Frequency: 700/800/850/900/1700(AWS)/1800/1900/2100/2600MHz
- Gain: 3dBi
- Connector and cable: different options available (see ordering information)
- Dimensions: 234 x ø16 mm



### ORDERING INFORMATION

**118016202** MTX-Antenna STUB OPN868 GSM5+LTE700/2600 MHz 3dBi N M

## Simple 4G/LTE

Stub Screwed

### FEATURES

- Frequency: 700/800/850/900/1700(AWS)/1800/1900/2100/2600MHz + 868MHz
- Gain: 4.1dBi
- Connector and cable: different options available (see ordering information)



### ORDERING INFORMATION

**118016150** MTX-Antenna STUB Screwed OPN2124 GSM5+868+LTE700/2600 Pigtail - RG58 - 2m

## Simple 4G/LTE

Stub Screwed

### FEATURES

- Frequency: 700/800/850/900/1700(AWS)/1800/1900/2100/2600MHz
- Gain: 4.1dBi
- Connector and cable: different options available (see ordering information)
- Dimensions: 220 x ø16 mm



### ORDERING INFORMATION

**118016251** MTX-Antenna STUB Screwed OPN2124 GSM5+LTE700/2600 FME F - LL195 - 5m  
**118016236** MTX-Antenna STUB Screwed OPN2124 GSM5+LTE700/2600 SMA M - LL195 - 10m  
**118016239** MTX-Antenna STUB Screwed OPN2124 GSM5+LTE700/2600 SMA M - LL195 - 20m  
**118016238** MTX-Antenna STUB Screwed OPN2124 GSM5+LTE700/2600 SMA M - LL195 - 5m

## Simple 4G/LTE

Stub

### FEATURES

- Frequency: 700/800/850/900/1700(AWS)/1800/1900/2100/2600MHz
- Gain: 0dBi
- Connector and cable: different options available (see ordering information)
- Dimensions: 68.1 x ø7 mm



### ORDERING INFORMATION

**118012390** MTX-Antenna STUBBY GSM5+LTE700/2600 0 dBi SMA M

## Simple 4G/LTE

Stubby

### FEATURES

- Frequency: 700/800/850/900/1700(AWS)/1800/1900/2100/2600MHz
- Gain: 1.5dBi
- Connector and cable: different options available (see ordering information)
- Dimensions: 53 x ø7 mm



### ORDERING INFORMATION

**118009286** MTX-Antenna STUBBY GSM5+LTE700/2700 SMA M R/A

## Simple 4G/LTE

Stub

### FEATURES

- Frequency: 700/800/850/900/1700(AWS)/1800/1900/2100/2600MHz
- Gain: 5dBi
- Connector and cable: different options available (see ordering information)
- Dimensions: 233 x 24 mm



### ORDERING INFORMATION

**118009317** MTX-Antenna STUBDUCKSW GSM5+LTE700/2700 5dbi SMA M

## Simple 4G/LTE

Stub

### FEATURES

- Frequency: 700/800/850/900/1700(AWS)/1800/1900/2100/2600MHz
- Gain: 2.9dBi
- Connector and cable: different options available (see ordering information)
- Dimensions: 135 x 19 x 10 mm



### ORDERING INFORMATION

**118016087** MTX-Antenna STUBFLATSW OPNW1124 GSM5+LTE700/2600 2.9 dBi SMA M

## Simple 4G/LTE

Stub

### FEATURES

- Frequency: 700/800/850/900/1700(AWS)/1800/1900/2100/2600MHz
- Gain: 5dBi
- Connector and cable: different options available (see ordering information)
- Dimensions: 280 x  $\varnothing$ 12.7 mm



### ORDERING INFORMATION

**118009240** MTX-Antenna STUBSW GSM5+LTE700/2700 5dbi SMA M

## Simple 4G/LTE

Magnetic Stub

### FEATURES

- Frequency: 700/800/850/900/1700(AWS)/1800/1900/2100/2600MHz
- Gain: 5dBi
- Connector and cable: different options available (see ordering information)
- Dimensions: 280 x  $\varnothing$ 70 mm



### ORDERING INFORMATION

**118009242** MTX-Antenna STUBSW GSM5+LTE700/2700 5dbi SMA M + MagneticBase SMA M - RG174 - 3m

## Simple 4G/LTE

Stub

### FEATURES

- Frequency: 700/800/850/900/1700(AWS)/1800/1900/2100/2600MHz
- Gain: 3dBi
- Connector and cable: different options available (see ordering information)
- Dimensions: 71 x  $\varnothing$ 10 mm



### ORDERING INFORMATION

**118016185** MTX-Antenna STUBSW OPN1024 GSM5+LTE700/2700 3dbi SMA M

## Simple 4G/LTE

Stub

### FEATURES

- Frequency: 700/800/850/900/1700(AWS)/1800/1900/2100/2600MHz
- Gain: 1dBi
- Connector and cable: different options available (see ordering information)
- Dimensions: 171 x 18 mm



### ORDERING INFORMATION

**118012332** MTX-Antenna STUBSW WTR GSM5+LTE700/2600 1.0 dBi SMA M

## Simple 4G/LTE

Stub

### FEATURES

- Frequency: 700/800/850/900/1700(AWS)/1800/1900/2100/2600MHz
- Gain: 5dBi
- Connector and cable: different options available (see ordering information)
- Dimensions: 270 x 17 mm



### ORDERING INFORMATION

**118009275** MTX-Antenna STUBSW-EA GSM5+LTE700/2700 5dbi SMA M

## Simple 4G/LTE

Magnetic Stub

### FEATURES

- Frequency: 700/800/850/900/1700(AWS)/1800/1900/2100/2600MHz
- Gain: 5dBi
- Connector and cable: different options available (see ordering information)
- Dimensions: 270 x ø70 mm



### ORDERING INFORMATION

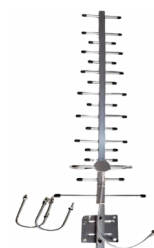
**118009209** MTX-Antenna STUBSW-EA GSM5+LTE700/2700 5dbi SMA M + MagneticBase FME F - RG174 - 3m  
**118009328** MTX-Antenna STUBSW-EA GSM5+LTE700/2700 5dbi SMA M + MagneticBase SMA M - RG174 - 3m

## Simple 4G/LTE

Yagi

### FEATURES

- Frequency: 700/800/850/900/1700(AWS)/1800/1900/2100/2600MHz
- Gain: 12dBi
- Connector and cable: different options available (see ordering information)
- Dimensions: 910 x 185 x 16 mm



### ORDERING INFORMATION

**118009349** MTX-Antenna YAGI GSM5+LTE700/2700-3000 12dBi SMA M - LL195 - 20m  
**118009341** MTX-Antenna YAGI GSM5+LTE700/2700-3000 12dBi SMA M - LL195 - 3m

## Combi 3G + GNSS

Adhesive Blade

### FEATURES

- Frequency: 800/900/1800/1900/2100MHz + (GPS)1575,42MHz
- Gain: (3G)2.5dBi; (GNSS)27dB
- Connector and cable: different options available (see ordering information)
- Dimensions: 147 x 26 x 16 mm



### ORDERING INFORMATION

**118009145** MTX-Antenna Adhesive BLADE (GSM5 FME F) + (GPS SMA M) - RG174 - 3m

## Combi 3G + GNSS

Adhesive Esfera

### FEATURES

- Frequency: 800/900/1800/1900/2100MHz + (GPS)1575,42MHz
- Gain: (3G)0dBi; (GNSS)20dB
- Connector and cable: different options available (see ordering information)
- Dimensions: 17 x ø50.4 mm



### ORDERING INFORMATION

**118009033** MTX-Antenna Adhesive ESFERA (GSM5 FME F) + (GPS SMA M) - RG174 - 1m  
**118009207** MTX-Antenna Adhesive ESFERA (GSM5 FME F) + (GPS SMA M) - RG174 - 2m  
**118009011** MTX-Antenna Adhesive ESFERA (GSM5 FME F) + (GPS SMA M) - RG174 - 5m  
**118009030** MTX-Antenna Adhesive ESFERA (GSM5 MMCX M) + (GPS SMA M) - RG174 - 5m  
**118009346** MTX-Antenna Adhesive ESFERA (GSM5 SMA M) + (GPS SMA M) - RG174 - 1m

## Combi 3G + GNSS

Adhesive

### FEATURES

- Frequency: 900/1800/2100MHz + (GPS)1575,42MHz
- Gain: (3G)0dBi; (GNSS)27dB
- Connector and cable: different options available (see ordering information)
- Dimensions: 77 x 34 x 14.3 mm



### ORDERING INFORMATION

<b>118016009</b>	MTX-Antenna Adhesive OPN425 (GSM3 Fakra D Jack-F) + (GPS Fakra C Jack-F) - RG174 - 1.5m
<b>118016088</b>	MTX-Antenna Adhesive OPN425 (GSM3 Fakra D Jack-F) + (GPS Fakra C Jack-F) - RG174 - 250mm
<b>118016010</b>	MTX-Antenna Adhesive OPN425 (GSM3 Fakra D Jack-F) + (GPS Fakra C Jack-F) - RG174 - 5m

## Combi 3G + GNSS

Adhesive

### FEATURES

- Frequency: 800/900/1800/1900/2100MHz + (GPS)1575,42MHz
- Gain: (4G)3dBi; (GNSS)28dB
- Connector and cable: different options available (see ordering information)
- Dimensions: 83 x 35 x 13.3 mm



### ORDERING INFORMATION

<b>118016144</b>	MTX-Antenna Adhesive OPN4800 (GSM5 Fakra D Jack-F) + (GPS Fakra C Jack-F) - RG174 - 3m
<b>118016097</b>	MTX-Antenna Adhesive OPN4800 (GSM5 FME F R/A) + (GPS SMA M R/A) - RG174 - 5m
<b>118016137</b>	MTX-Antenna Adhesive OPN4800 (GSM5 FME F) + (GPS SMA M) - RG174 - 3m
<b>118016089</b>	MTX-Antenna Adhesive OPN4800 (GSM5 FME F) + (GPS SMA M) - RG174 - 5m
<b>118016179</b>	MTX-Antenna Adhesive OPN4800 (GSM5 SMA M) + (GPS SMA M) - RG174 - 3m

## Combi 3G + GNSS

Magnetic/Adhesive

### FEATURES

- Frequency: 800/900/1800/1900/2100MHz + (GPS)1575,42MHz
- Gain: (4G)2.6dBi; (GNSS)28dB
- Connector and cable: different options available (see ordering information)
- Dimensions: 50 x 40 x 13 mm



### ORDERING INFORMATION

<b>118016217</b>	MTX-Antenna Magnetic/Adhesive OPN4600MP (GSM5 Fakra D Jack-F) + (GPS Fakra C Jack-F) - LL100 - 1.5m
<b>118016237</b>	MTX-Antenna Magnetic/Adhesive OPN4600MP (GSM5 Fakra D Jack-F) + (GPS Fakra C Jack-F) - LL100 - 150mm
<b>118016123</b>	MTX-Antenna Magnetic/Adhesive OPN4600MP (GSM5 Fakra D Jack-F) + (GPS Fakra C Jack-F) - RG174 - 2m

## Combi 3G + GNSS

Screwed

### FEATURES

- Frequency: 700/800/850/900/1700(AWS)/1800/1900/2100/2600MHz + (GPS) 1575,42MHz
- Gain: (3G)3dBi
- Connector and cable: different options available (see ordering information)



### ORDERING INFORMATION

**118012396** MTX-Antenna Screwed CPG (GSM5 SMA M RP) + (GPS SMA M RP) - RG174 - 2m  
**118012225** MTX-Antenna Screwed CPG (GSM5 SMA M) + (GPS-GLO SMA M) RG174 - 3m

## Combi 3G + GNSS

Screwed Esfera

### FEATURES

- Frequency: 800/900/1800/1900/2100MHz + (GPS)1575,42MHz
- Gain: (3G)0dBi
- Connector and cable: different options available (see ordering information)
- Dimensions: 53 x ø23 mm



### ORDERING INFORMATION

**118009289** MTX-Antenna Screwed ESFERA (GSM5 FME F) + (GPS SMA M) - RG174 - 150mm  
**118009144** MTX-Antenna Screwed ESFERA (GSM5 FME F) + (GPS SMA M) - RG174 - 3m  
**118009201** MTX-Antenna Screwed ESFERA (GSM5 FME F) + (GPS SMA M) - RG174 - 5m  
**118009147** MTX-Antenna Screwed ESFERA (GSM5 SMA M) + (GPS SMA M) - RG174 - 3m  
**118009167** MTX-Antenna Screwed ESFERA (GSM5 SMA M) + (GPS SMA M) - RG174 - 5m  
**118009246** MTX-Antenna Screwed ESFERA (GSM5 U.FL) + (GPS U.FL) - 1.32 - 300 mm

## Combi 3G + GNSS

Screwed

### FEATURES

- Frequency: 800/900/1800/1900/2100MHz + (GPS)1575,42MHz/(GLONASS) 1602MHz/(Galileo)1278.75MHz
- Gain: (4G)3.6dBi; (GNSS)28dB
- Connector and cable: different options available (see ordering information)



### ORDERING INFORMATION

**118016124** MTX-Antenna Screwed OPN6600 (GSM5 Fakra D Jack-F) + (GPS Fakra C Jack-F) - RG174 - 200mm  
**118016211** MTX-Antenna Screwed OPN6600 (GSM5 Fakra D Jack-F) + (GPS Fakra C Jack-F) - RG174 - 3m  
**118016006** MTX-Antenna Screwed OPN6600 (GSM5 Fakra D Jack-F) + (GPS Fakra C Jack-F) - RG174 - 1m  
**118016016** MTX-Antenna Screwed OPN6600 (GSM5 SMA M)+ (GPS SMA M) - RG174 - 15m  
**118016134** MTX-Antenna Screwed OPN6600 (GSM5 SMA M)+ (GPS SMA M) - RG174 - 3m  
**118016133** MTX-Antenna Screwed OPN6600 (GSM5 SMA M)+ (GPS SMA M) - RG174 - 5m



## Combi 3G + GNSS

Screwed

### FEATURES

- Frequency: 800/900/1800/1900/2100MHz + (GPS)1575,42MHz/(GLONASS) 1602MHz/(Galileo)1278.75MHz
- Gain: (4G)3.9dBi; (GNSS)28dB
- Connector and cable: different options available (see ordering information)



### ORDERING INFORMATION

<b>118016054</b>	MTX-Antenna Screwed OPN860B (GSM5 FME F)+(GPS SMB F) - RG174 - 500mm
<b>118016022</b>	MTX-Antenna Screwed OPN860BF (GSM5 FME M)+(GPS SMB F) - RG174 - 500mm
<b>118016121</b>	MTX-Antenna Screwed OPN860BG (GSM5 Fakra D Jack-F)+(GPS/GLO Fakra C Jack-F) - RG174 - 5m

## Combi 3G + GNSS

Screwed RoofBall

### FEATURES

- Frequency: 900/1800/2100MHz + (GPS)1575,42MHz
- Gain: (3G)0dBi; (GNSS)27dB
- Connector and cable: different options available (see ordering information)
- Dimensions: 53 x 30 x 30 mm



### ORDERING INFORMATION

<b>118009078</b>	MTX-Antenna Screwed ROOFBALL (GSM3 FME F) + (GPS SMA M) - RG174U - 5m
<b>118009314</b>	MTX-Antenna Screwed ROOFBALL (GSM3 SMA M) + (GPS SMA M) - RG174 - 1m
<b>118009096</b>	MTX-Antenna Screwed ROOFBALL (GSM3 SMA M) + (GPS SMA M) - RG174 - 5m
<b>118009245</b>	MTX-Antenna Screwed ROOFBALL (GSM3 U.FL) + (GPS U.FL) 1.32 - 300mm

## Combi 3G + GNSS + WiFi

Screwed Shark

### FEATURES

- Frequency: 800/900/1800/1900/2100MHz + (GPS)1575,42MHz + 2,4/5GHz
- Gain: (4G)3.9dBi; (GNSS)28dB
- Connector and cable: different options available (see ordering information)
- Dimensions: 90 x 60 x 46 mm



### ORDERING INFORMATION

<b>118016216</b>	MTX-Antenna Screwed Shark OPN8606 (GSM5 FakraD F)+(GPS FakraC F)+(2.4GHz Fakral F) LL100- 200mm
<b>118016199</b>	MTX-Antenna Screwed Shark OPN8606 (GSM5 FakraD F)+(GPS-GLO FakraC F)+(2.4GHz Fakral F) LL100- 200mm
<b>118016041</b>	MTX-Antenna Screwed Shark OPN866B (GSM5 Fakra D F)+(GPS Fakra C F)+(2.4GHz SMA M) - RG174 - 3m

## MIMO 4G/LTE

Magnetic

### FEATURES

- Frequency: 700/800/850/900/1700(AWS)/1800/1900/2100/2600MHz
- Gain: 4.5dBi
- Connector and cable: different options available (see ordering information)
- Dimensions: 80 x 76 x 13 mm



### ORDERING INFORMATION

**118016146** MTX-Antenna Magnetic OPN6024 GSM5+LTE700/2700 4dBi MIMO 2xSMA M - D302 - 3m

## MIMO 4G/LTE

Magnetic

### FEATURES

- Frequency: 700/800/850/900/1700(AWS)/1800/1900/2100/2600MHz
- Gain: 3.5dBi
- Connector and cable: different options available (see ordering information)
- Dimensions: 68.2 x ø54 mm



### ORDERING INFORMATION

**118016156** MTX-Antenna Magnetic OPN7724 GSM5+LTE700/2700 3.5dBi MIMO 2xSMA M - LL100 - 2m

## MIMO 4G/LTE

Omni - outdoor

### FEATURES

- Frequency: 700/800/850/900/1700(AWS)/1800/1900/2100/2600MHz
- Gain: 6.2dBi
- Connector and cable: different options available (see ordering information)
- Dimensions: 750 x ø75 mm



### ORDERING INFORMATION

**118010120** MTX-Antenna Omni Marine-402 GSM5+LTE452/2700 MIMO 6.2dBi 2x SMA M - LL195 - 2m

## MIMO 4G/LTE

Panel

### FEATURES

- Frequency: 700/800/850/900/1700(AWS)/1800/1900/2100/2600MHz
- Gain: 8dBi
- Connector and cable: different options available (see ordering information)
- Dimensions: 153 x 134 x 46 mm



### ORDERING INFORMATION

**600005025** MTX-Antenna PANEL COMP GSM5+LTE2700 5/8dBi MIMO 2xSMA M - LL100 - 300mm

## MIMO 4G/LTE

Panel

### FEATURES

- Frequency: 700/800/850/900/1700(AWS)/1800/1900/2100/2600MHz
- Gain: 4dBi
- Connector and cable: different options available (see ordering information)
- Dimensions: 235 x 135 x 85 mm



### ORDERING INFORMATION

**118010104** MTX-Antenna PANEL XPOL1 GSM5+LTE2700 MIMO 4dBi 2xSMA M - LL195 - 5m

## MIMO 4G/LTE

Screwed

### FEATURES

- Frequency: 700/800/850/900/1700(AWS)/1800/1900/2100/2600MHz
- Gain: 5dBi
- Connector and cable: different options available (see ordering information)
- Dimensions: 33.5 x ø102 mm



### ORDERING INFORMATION

**118012336** MTX-Antenna Screwed CMO GSM5+LTE700/2600 5dBi MIMO 2xSMA M - RG174 - 1m  
**118012364** MTX-Antenna Screwed CMO GSM5+LTE700/2600 5dBi MIMO 2xSMA M - RG174 - 2m  
**118012419** MTX-Antenna Screwed CMO GSM5+LTE700/2600 5dBi MIMO SMA M - FME F - RG174 - 2m

## MIMO 4G/LTE

Screwed

### FEATURES

- Frequency: 700/800/850/900/1700(AWS)/1800/1900/2100/2600MHz
- Gain: 4dBi
- Connector and cable: different options available (see ordering information)
- Dimensions: 26 x ø100 mm



### ORDERING INFORMATION

**118009301** MTX-Antenna Screwed GSM5+LTE700/2600 4dBi MIMO 2xSMA M - RG174 - 5m

## MIMO 4G/LTE

Screwed

### FEATURES

- Frequency: 700/800/850/900/1700(AWS)/1800/1900/2100/2600MHz
- Gain: 2dBi
- Connector and cable: different options available (see ordering information)
- Dimensions: 14.5 x ø46.6 mm



### ORDERING INFORMATION

**118006117** MTX-Antenna Screwed J03 GSM5+LTE700/2600 MIMO 2.5dBi 2xSMA M - RG174 - 3m

## MIMO 4G/LTE

Screwed

### FEATURES

- Frequency: 700/800/850/900/1700(AWS)/1800/1900/2100/2600MHz
- Gain: 4.4dBi
- Connector and cable: different options available (see ordering information)
- Dimensions: 80 x 74 x 14.7 mm



### ORDERING INFORMATION

**118016175** MTX-Antenna screwed OPN6024 GSM5+LTE700/2700 4dBi MIMO 2xSMA M - 2m  
**118016250** MTX-Antenna screwed OPN6024 GSM5+LTE700/2700 4dBi MIMO 2xSMA M - 5m

## MIMO 4G/LTE

Screwed

### FEATURES

- Frequency: 700/800/850/900/1700(AWS)/1800/1900/2100/2600MHz
- Gain: 2.2dBi
- Connector and cable: different options available (see ordering information)
- Dimensions: 31.5 x ø146 mm



### ORDERING INFORMATION

**118016051** MTX-Antenna Screwed OPN6524 GSM5+LTE2600 MIMO 5dBi 2xSMA M - RG174 - 3m

## MIMO 4G/LTE

Screwed

### FEATURES

- Frequency: 700/800/850/900/1700(AWS)/1800/1900/2100/2600MHz
- Gain: 3.4dBi
- Connector and cable: different options available (see ordering information)
- Dimensions: 65.5 x ø77.3 mm



### ORDERING INFORMATION

**118016183** MTX-Antenna Screwed OPN6A24 GSM5+LTE700/2600 3.4dBi MIMO 2xSMA M - D302 - 3m  
**118016052** MTX-Antenna Screwed OPN6A24 GSM5+LTE700/2600 3.4dBi MIMO 2xSMA M - RG174 - 3m

## MIMO 4G/LTE

Screwed

### FEATURES

- Frequency: 700/800/850/900/1700(AWS)/1800/1900/2100/2600MHz
- Gain: 4.1dBi
- Connector and cable: different options available (see ordering information)
- Dimensions: 69 x ø60 mm



### ORDERING INFORMATION

**118016157** MTX-Antenna screwed OPN7724 GSM5+LTE700/2600 4dBi MIMO 2xSMA M - LL100 - 2m

## Combi 4G/LTE + GNSS

Adhesive

### FEATURES

- Frequency: 700/800/850/900/1700(AWS)/1800/1900/2100/2600MHz + (GPS) 1575,42MHz
- Gain: (4G)2.4dBi; (GNSS)28dB
- Connector and cable: different options available (see ordering information)



### ORDERING INFORMATION

<b>118016095</b>	MTX-Antenna Adhesive OPN4841 (GSM5+LTE700/2600 FME F R/A) + (GPS SMA M R/A) - LMR100 + RG174 - 5m
<b>118016117</b>	MTX-Antenna Adhesive OPN4841 (GSM5+LTE700/2600 FME F) + (GPS SMA M) - LMR100 + RG174 - 3m
<b>118016092</b>	MTX-Antenna Adhesive OPN4841 (GSM5+LTE700/2600 FME F) + (GPS SMA M) - LMR100 + RG174 - 5m
<b>118016231</b>	MTX-Antenna Adhesive OPN4841 (GSM5-LTE700/2600 SMA M) + (GPS SMA M) - LL100 - 5m

## Combi 4G/LTE + GNSS

Screwed

### FEATURES

- Frequency: 700/800/850/900/1700(AWS)/1800/1900/2100/2600MHz + (GPS) 1575,42MHz
- Gain: (4G)4dBi
- Connector and cable: different options available (see ordering information)



### ORDERING INFORMATION

<b>118016219</b>	MTX-Antenna Screwed OPN6A41B (GSM5+LTE700/2700 Fakra D Jack-F) + (GPS Fakra C Jack-F) - LL100- 300mm
------------------	--

## Combi 4G/LTE + GNSS

Magnetic

### FEATURES

- Frequency: 700/800/850/900/1700(AWS)/1800/1900/2100/2600MHz + (GPS) 1575,42MHz
- Gain: (4G)3.1dBi; (GNSS)28dB
- Connector and cable: different options available (see ordering information)



### ORDERING INFORMATION

<b>118016173</b>	MTX-Antenna Magnetic OPN7741 (GSM5+LTE700/2700 MIMO Fakra D Jack-F)+(GPS Fakra C Jack-F)-LL100-3m
------------------	---

## Combi 4G/LTE + GNSS

Screwed

### FEATURES

- Frequency: 700/800/850/900/1700(AWS)/1800/1900/2100/2600MHz + (GPS) 1575,42MHz
- Gain: (4G)4.3dBi; (GNSS)26dB
- Connector and cable: different options available (see ordering information)



### ORDERING INFORMATION

<b>118012380</b>	MTX-Antenna Screwed CMG (GSM5+LTE700/2600 MIMO - FME F)+(GPS - SMA M) RG174 - 1m
<b>118012423</b>	MTX-Antenna Screwed CMG (GSM5+LTE700/2600 MIMO - FME F)+(GPS - SMA M) RG174 - 2m
<b>118012374</b>	MTX-Antenna Screwed CMG (GSM5+LTE700/2600 MIMO - SMA M)+(GPS - SMA M) RG174 - 2m

## Combi 4G/LTE + GNSS

Screwed

### FEATURES

- Frequency: 700/800/850/900/1700(AWS)/1800/1900/2100/2600MHz + (GPS) 1575,42MHz
- Gain: (4G)3.6dBi; (GNSS)28dB
- Connector and cable: different options available (see ordering information)



### ORDERING INFORMATION

<b>118016171</b>	MTX-Antenna Screwed OPN7741 (GSM5+LTE700/2700 MIMO U.FL)+(GPS-GLO U.FL) RG178 -150mm
<b>118016167</b>	MTX-Antenna Screwed OPN7741 (GSM5+LTE700/2700 MIMO U.FL)+(GPS-GLO U.FL) RG178 -200mm

## Combi 4G/LTE + GNSS + WiFi

Adhesive

### FEATURES

- Frequency: 700/800/850/900/1700(AWS)/1800/1900/2100/2600MHz + (GPS) 1575,42MHz + 2,4/5GHz
- Gain: (4G)3.9dBi; (GNSS)28dB; (WIFI)2.5dBi
- Connector and cable: different options available (see ordering information)



### ORDERING INFORMATION

<b>118016243</b>	MTX-Antenna Adhesive OPN4A50PCF (GSM5+LTE 2X SMA M)+(2.4/5GHz 2X SMA M RP)+(GPS-GLO-BEI SMA M) - LL195/LL100 - 5m
------------------	---

## Combi 4G/LTE + GNSS + WiFi

Screwed

### FEATURES

- Frequency: 700/800/850/900/1700(AWS)/1800/1900/2100/2600MHz + (GPS) 1575,42MHz + 2,4/5GHz
- Gain: (4G)2.3dBi; (GNSS)28dB; (WIFI)1.9dBi
- Connector and cable: different options available (see ordering information)



### ORDERING INFORMATION

**118016111** MTX-Antenna Screwed 7050 (GSM5+LTE - 2xFME F)+(2.4 - 2xSMA M RP)+(GPS-GLO SMA M) 4xRG178/RG174 - 5m

## Combi 4G/LTE + GNSS + WiFi

Screwed

### FEATURES

- Frequency: 700/800/850/900/1700(AWS)/1800/1900/2100/2600MHz + (GPS) 1575,42MHz/(GLONASS)1602MHz/(Galileo)1278.75MHz + 2,4/5GHz
- Gain: (4G)4.2dBi; (GNSS)24dB; (WIFI)5.6dBi
- Connector and cable: different options available (see ordering information)



### ORDERING INFORMATION

**118016174** MTX-Antenna Screwed OPN7750 (GSM5+LTE700/2700 U.FL)+(2.4/5 GHz U.FL)+(GPS-GLO U.FL) RG178 -200mm

## Combi 4G/LTE + GNSS + WiFi

Screwed

### FEATURES

- Frequency: 700/800/850/900/1700(AWS)/1800/1900/2100/2600MHz + (GPS) 1575,42MHz + 2,4/5GHz
- Gain: (4G)4dBi; (GNSS)28dB; (WIFI)5dBi
- Connector and cable: different options available (see ordering information)



### ORDERING INFORMATION

**118012375** MTX-Antenna Screwed LPO (GSM5+LTE700/2600 MIMO SMA M)+(GPS SMA M)+(2.4/5GHz x2 SMA M RP) - RG174-2m



## Combi 4G/LTE + GNSS + WiFi

Screwed

### FEATURES

- Frequency: 700/800/850/900/1700(AWS)/1800/1900/2100/2600MHz + (GPS) 1575,42MHz + 2,4/5GHz
- Gain: (4G)5.8dBi
- Connector and cable: different options available (see ordering information)



### ORDERING INFORMATION

**118010118** MTX-Antenna Screwed MIMO3 (433MHz+GSM5+LTE MIMO SMA M)+(2.4/5GHz MIMO SMA M)+(GPS -GLO SMA M) - 4xLL195+RTK031 - 2m

## Combi 4G/LTE + GNSS + WiFi

Screwed

### FEATURES

- Frequency: 700/800/850/900/1700(AWS)/1800/1900/2100/2600MHz + (GPS) 1575,42MHz + 2,4/5GHz
- Gain: (4G)4.2dBi; (GNSS)28dB; (WiFi)5.6dBi
- Connector and cable: different options available (see ordering information)



### ORDERING INFORMATION

**118016100** MTX-Antenna Screwed OPN7050 (GSM5+LTE700/2700 MIMO FME F)+(GPS-GLO SMA M)+(2.4/5GHz x2 SMA M RP) 5m  
**118016129** MTX-Antenna Screwed OPN7050 (GSM5+LTE700/2700 MIMO SMA M) (2.4-5GHz MIMO SMA M RP)+(GPS FME F) - 3m

## Combi 4G/LTE + GNSS + WiFi + TETRA

Screwed Shark

### FEATURES

- Frequency: 700/800/850/900/1700(AWS)/1800/1900/2100/2600MHz + (GPS) 1575,42MHz + 2,4/5GHz + 380-400MHz
- Gain: 1.5dBi
- Connector and cable: different options available (see ordering information)



### ORDERING INFORMATION

**118010312** MTX-Antenna Screwed Shark GPSB (4G/LTE SMA M)+(GPS SMA M)+(2,4/5/6GHz WiFi SMA M RP)+(TETRA BNC M) - 5m

## Simple 5G

Adhesive Blade

### FEATURES

- Frequency: 800/900/1800/2100/2600/3500MHz
- Gain: 2.5dBi
- Connector and cable: different options available (see ordering information)
- Dimensions: 47.7 x 22.8 mm



### ORDERING INFORMATION

**118009320** MTX-Antenna Adhesive BLADE GSM5+LTE600/2700+5G 2.5dBi SMA M - RG174 - 3m

## Simple 5G

Panel

### FEATURES

- Frequency: 800/900/1800/2100/2600/3500MHz
- Gain: 10dBi
- Connector and cable: different options available (see ordering information)
- Dimensions:



### ORDERING INFORMATION

**118009354** MTX-Antenna PANEL AD25 GSM5+LTE700/2700+5G 6/8/10dBi SMA M - LL195 - 15m

## Simple 5G

Screwed

### FEATURES

- Frequency: 800/900/1800/2100/2600/3500MHz
- Gain: 4dBi
- Connector and cable: different options available (see ordering information)
- Dimensions: -



### ORDERING INFORMATION

**118009356** MTX-Antenna Screwed LS GSM5+LTE700/2600+5G 4dBi SMA M - RG174 -2m

## Simple 5G

Screwed Puck

### FEATURES

- Frequency: 800/900/1800/2100/2600/3500MHz
- Gain: 8dBi
- Connector and cable: different options available (see ordering information)
- Dimensions: 36 x ø99.3 mm



### ORDERING INFORMATION

**118010134** MTX-Antenna Screwed PUCK White GSM5+LTE+5G 617/4200 6dBi SMA M - RG174 - 2m  
**118010123** MTX-Antenna Screwed PUCK GSM5+LTE700/2600+5G 6dBi SMA M - RG174 - 2m

## Simple 5G

Stub

### FEATURES

- Frequency: 800/900/1800/2100/2600/3500MHz
- Gain: 3.5dBi
- Connector and cable: different options available (see ordering information)
- Dimensions: 209 x 31 x ø13 mm



### ORDERING INFORMATION

**118010133** MTX-Antenna STUB OMNI-85 GSM5+LTE+5G 617-3800 3.5dBi SMA M

## Simple 5G

Stub

### FEATURES

- Frequency: 800/900/1800/2100/2600/3500MHz + 2,4/5GHz
- Gain: 6dBi
- Connector and cable: different options available (see ordering information)
- Dimensions: 230 x 56 mm



### ORDERING INFORMATION

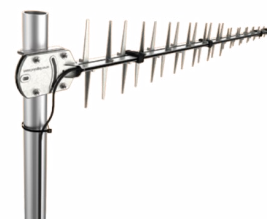
**118010308** MTX-Antenna STUBSW PWB GSM5+LTE+5G 3.8/4.4-6GHz 2/4/6dBi SMA M - PWB-6-60-RSMAP

## Simple 5G

Yagi

### FEATURES

- Frequency: 800/900/1800/2100/2600/3500MHz
- Gain: 11dBi
- Connector and cable: different options available (see ordering information)
- Dimensions: 1112 x 198.5 mm



### ORDERING INFORMATION

**118010113** MTX-Antenna YAGI LPDA GSM5+LTE+5G 690-3800 11dBi SMA M - LL195 - 7m

## Simple 5G

Omni - outdoor

### FEATURES

- Frequency: 800/900/1800/2100/2400/2600/3500/5000MHz
- Gain: 9dBi
- Connector and cable: different options available (see ordering information)
- Dimensions: 635 x ø71 mm



### ORDERING INFORMATION

**118010140** MTX-Antenna Omni-293 LoRa/GSM5+LTE617/2700+5G3800+2.4GHz 9dBi N F

## Combi 5G + GNSS

TRAIN Screwed

### FEATURES

- Frequency: 800/900/1800/2100/2600/3500MHz + (GPS)1575,42MHz/ (GLONASS)1602MHz
- Gain: (5G)6dBi; (GNSS) 26dB
- Connector and cable: different options available (see ordering information)



### ORDERING INFORMATION

**118010310** MTX-Antenna Screwed-Train (GSM5/LTE/5G MIMO N F)+(GPS/GLO TNC F) - TRNMG-7-60NJ

## Combi 5G + WiFi

Panel

### FEATURES

- Frequency: 800/900/1800/2100/2600/3500MHz + 2,4/5GHz
- Gain: 11dBi
- Connector and cable: different options available (see ordering information)
- Dimensions: 260 x 264 x 168 mm



### ORDERING INFORMATION

**118010136** MTX-Antenna PANEL XPOL GSM5+LTE690/3800+5G 11dBi /2.4-5GHz 7dBi - 4x4 LTE / 2x2 Wi-Fi + CPE (EPNT-2)

## Combi 5G + WiFi

Screwed Puck

### FEATURES

- Frequency: 800/900/1800/2100/2600/3500MHz + 2,4/5GHz
- Gain: 6dBi
- Connector and cable: different options available (see ordering information)
- Dimensions: 36 x ø99.3 mm



### ORDERING INFORMATION

**118010130** MTX-Antenna Screwed PUCK (GSM5/LTE/5G MIMO) 6dBi (2.4/5GHz) 7.5dBi 3xSMA M - RTK031 - 2m

## Combi 5G + GNSS + WiFi

Screwed

### FEATURES

- Frequency: 800/900/1800/2100/2600/3500MHz + (GPS)1575,42MHz + 2,4/5GHz
- Gain: (5G)5dBi; (GNSS) 26dB
- Connector and cable: different options available (see ordering information)



### ORDERING INFORMATION

**118010300** MTX-Antenna Screwed LGAM (GSM5/LTE/5G MIMO SMA M )+(GPS SMA M)+(2.4/5GHz x2 SMA M RP) -RG174-3m  
**118010306** MTX-Antenna Screwed LGAM (GSM5+LTE+5G MIMO SMA M )+(GPS SMA M)+(2.4/5GHz x2 SMA M RP) -RG174-500mm

## Combi 5G + GNSS + WiFi

Screwed Puck

### FEATURES

- Frequency: 800/900/1800/2100/2600/3500MHz + 1575.42/1600MHz + 2,4/5GHz
- Gain: (5G)6dBi; (GNSS)21dB
- Connector and cable: different options available (see ordering information)



### ORDERING INFORMATION

**118010142** MTX-Antenna Screwed MIMOPUCK (GSM5/LTE/5G MIMO) (2.4/5GHz MIMO) (GPS-GLO) 5xSMA M - RTK-31 - 2m

## Combi 5G + GNSS + WiFi

Screwed Puck

### FEATURES

- Frequency: 800/900/1800/2100/2600/3500MHz + (GPS)1575,42MHz/ (GLONASS)1602MHz
- Gain: (5G)6dBi
- Connector and cable: different options available (see ordering information)



### ORDERING INFORMATION

**118010119** MTX-Antenna Screwed PUCK (GSM5+LTE700/2600+5G MIMO)(2.4/5GHz MIMO)(GPS-GLO) 5xSMA M -2m  
**118010122** MTX-Antenna Screwed PUCK (GSM5+LTE7002600+5G 6dBi MIMO)(GPS-GLO) 3xSMA M -2m

## MIMO 5G

Omni - outdoor

### FEATURES

- Frequency: 800/900/1800/2100/2600/3500MHz
- Gain: 7dBi
- Connector and cable: different options available (see ordering information)
- Dimensions: 371 x 221 x 40 mm



### ORDERING INFORMATION

**118010303** MTX-Antenna OMNI DWMM4 LTE+5G 3,5-7dBi 4x4MIMO 4 SMA M CS32 - 5m

## MIMO 5G

Omni - outdoor

### FEATURES

- Frequency: 800/900/1800/2100/2600/3500MHz
- Gain: 4dBi
- Connector and cable: different options available (see ordering information)
- Dimensions: 187 x ø106 mm



### ORDERING INFORMATION

**118012424** MTX-Antenna Omni GSM5+LTE+5G 617/3800MHz MIMO 2xSMA M + Cables RF195 - 10m  
**118012425** MTX-Antenna Omni GSM5+LTE+5G 617/3800MHz MIMO 2xSMA M + Pigtails - 150mm

## MIMO 5G

Omni - outdoor

### FEATURES

- Frequency: 800/900/1800/2100/2600/3500MHz
- Gain: 3.5dBi
- Connector and cable: different options available (see ordering information)
- Dimensions: 247 x 157 x 88 mm



### ORDERING INFORMATION

**118010129** MTX-Antenna OMNI XPOL1 GSM5+LTE+5G 698/3800 3dBi MIMO 2xSMA M - LL195 -5m

## MIMO 5G

Omni - outdoor

### FEATURES

- Frequency: 800/900/1800/2100/2600/3500MHz + 2,4/5GHz
- Gain: 6.2dBi
- Connector and cable: different options available (see ordering information)
- Dimensions: 646 x ø71 mm



### ORDERING INFORMATION

**118010125** MTX-Antenna Omni-600 GSM5+LTE+5G+2.4GHz 410-3800MHz 6.2dBi MIMO SMA M - LL195 - 5m

## MIMO 5G

Panel

### FEATURES

- Frequency: 800/900/1800/2100/2600/3500MHz
- Gain: 9dBi
- Connector and cable: different options available (see ordering information)
- Dimensions: 510 x 310 x 90 mm



### ORDERING INFORMATION

**118010304** MTX-Antenna PANEL WMM4 LTE+5G 9dBi 4x4MIMO 4 SMA M CS32 - 5m

## MIMO 5G

Panel

### FEATURES

- Frequency: 800/900/1800/2100/2600/3500MHz
- Gain: 11dBi
- Connector and cable: different options available (see ordering information)
- Dimensions: 265 x 265 x 90 mm



### ORDERING INFORMATION

**118010139** MTX-Antenna PANEL XPOL2 GSM5+LTE690/3800+5G 11dBi MIMO 2xN F  
**118010135** MTX-Antenna PANEL XPOL2 GSM5+LTE690/3800+5G 11dBi MIMO 2xSMA M - LL195 - 10m  
**118010124** MTX-Antenna PANEL XPOL2 GSM5+LTE690/3800+5G 11dBi MIMO 2xSMA M - LL195 - 5m

## MIMO 5G

Panel

### FEATURES

- Frequency: 800/900/1800/2100/2600/3500MHz
- Gain: 11dBi
- Connector and cable: different options available (see ordering information)
- Dimensions: 290 x 444 x 110 mm



### ORDERING INFORMATION

**118010138** MTX-Antenna PANEL XPOL-24 GSM5+LTE+5G3400/4200 11dBi 4x4 MIMO SMA M - LL195 - 5m



## MIMO 5G

Screwed

### FEATURES

- Frequency: 800/900/1800/2100/2600/3500MHz + 2,4/5GHz + 868MHz
- Gain: 6.6dBi
- Connector and cable: different options available (see ordering information)
- Dimensions: 140 x 88 mm



### ORDERING INFORMATION

**118012430** MTX-Antenna Screwed LPO GSM5+LTE+5G 698/3800 5.8dBi MIMO 4xSMA M - RG316 - PigTail

## MIMO 5G

Screwed

### FEATURES

- Frequency: 800/900/1800/2100/2600/3500MHz
- Gain: 4.8dBi
- Connector and cable: different options available (see ordering information)
- Dimensions: 202.6 x 107.6 x 34.9 mm



### ORDERING INFORMATION

**118012428** MTX-Antenna Screwed Maverik GSM5+LTE+5G3.6-3.8 4.8dBi MIMO 4x SMA M - RG174 - 2m

## MIMO 5G

Screwed

### FEATURES

- Frequency: 800/900/1800/2100/2600/3500MHz
- Gain: 4.8dBi
- Connector and cable: different options available (see ordering information)
- Dimensions: 133 x ø96 mm



### ORDERING INFORMATION

**118016224** MTX-Antenna Screwed OPN7B83 GSM5+LTE600/2700+5G 4.5dBi MIMO 4x SMA M - LL195 - 3m

## MIMO 5G

Screwed Puck

### FEATURES

- Frequency: 800/900/1800/2100/2600/3500MHz
- Gain: 6dBi
- Connector and cable: different options available (see ordering information)
- Dimensions: 36 x ø99.3 mm



### ORDERING INFORMATION

**118010117** MTX-Antenna Screwed PUCK GSM5+LTE700/2600+5G 6dBi MIMO 2xSMA M - RG174 - 2m

## MIMO 5G

Yagi

### FEATURES

- Frequency: 800/900/1800/2100/2600/3500MHz
- Gain: 11dBi
- Connector and cable: different options available (see ordering information)
- Dimensions: 1112 x 198.5 mm



### ORDERING INFORMATION

**118010141** MTX-Antenna YAGI 2 x LPDA GSM5+LTE+5G 690-3800 11dBi MIMO 2xN F - LL195 - 7m (Brkt-33)

## MIMO 5G

Screwed

### FEATURES

- Frequency: 800/900/1800/2100/2600/3500MHz
- Gain: (5G)8dBi; (GNSS)26dB
- Connector and cable: different options available (see ordering information)
- Dimensions: 46 x ø170 mm



### ORDERING INFORMATION

**118010305** MTX-Antenna Screwed LPMM4 LTE+5G 9dBi 4x4MIMO SMA M - RG174 - 300mm

## Simple GNSS

Adhesive

### FEATURES

- Frequency: (GPS)1575,42MHz/(GLONASS)1602MHz/(Galileo)1278.75MHz
- Gain: 28dB
- Connector and cable: different options available (see ordering information)
- Dimensions: 41 x 34 x 14 mm



### ORDERING INFORMATION

**118016104** MTX-Antenna Adhesive OPN431P GPS SMA M - RG174 - 2m

## Simple GNSS

Internal

### FEATURES

- Frequency: (GPS)1575,42MHz/(GLONASS)1602MHz
- Gain: 0dB
- Connector and cable: different options available (see ordering information)
- Dimensions: 40 x 14 x 0.15 mm



### ORDERING INFORMATION

**118011036** MTX-Antenna Internal Bentoni GPS/GLO U.FL1.13 - 100mm (SRFG017-100)  
**118011051** MTX-Antenna Internal Bentoni GPS/GLO U.FL1.13 - 50mm (SRFG017-50)

## Simple GNSS

Internal PCB

### FEATURES

- Frequency: (GPS)1575,42MHz/(GLONASS)1602MHz
- Gain: 18.5dB
- Connector and cable: different options available (see ordering information)
- Dimensions: 7 x 7 x 0.9 mm



### ORDERING INFORMATION

**118011043** MTX-Antenna Internal PCB GPS/GLO 1559-1609MHz 7x7x0.9mm (M20047-1)

## Simple GNSS

Internal PCB

### FEATURES

- Frequency: (GPS)1575,42MHz
- Gain: 0dB
- Connector and cable: different options available (see ordering information)
- Dimensions: 7 x 5.8 x 0.4 mm



### ORDERING INFORMATION

**118011034** MTX-Antenna Internal PCB Sinica GPS 1559-1609MHz 7x7x1.1mm (SR4G008)

## Simple GNSS

Magnetic

### FEATURES

- Frequency: (GPS)1575,42MHz
- Gain: 28dB
- Connector and cable: different options available (see ordering information)
- Dimensions: 45.2 x 35.8 x 15.1 mm



### ORDERING INFORMATION

**118006119** MTX-Antenna Magnetic A2 GPS MCX M - RG174 - 1.5m  
**118006120** MTX-Antenna Magnetic A2 GPS MCX M - RG174 - 3m  
**118006125** MTX-Antenna Magnetic A2 GPS SMA M - RG174 - 3m  
**118006126** MTX-Antenna Magnetic A2 GPS SMA M - RG174 - 5m

## Simple GNSS

Magnetic

### FEATURES

- Frequency: (GPS)1575,42MHz
- Gain: 27dB
- Connector and cable: different options available (see ordering information)
- Dimensions: 38 x 34 x 12 mm



### ORDERING INFORMATION

**118009022** MTX-Antenna Magnetic GPS MCX M - RG174 - 5m  
**118009010** MTX-Antenna Magnetic GPS MCX M R/A - RG174 - 5m  
**118009196** MTX-Antenna Magnetic GPS SMA M - RG174 - 200mm  
**118009326** MTX-Antenna Magnetic GPS SMA M - RG174 - 800mm  
**118009221** MTX-Antenna Magnetic GPS SMA M - RG174 - 8m  
**118009321** MTX-Antenna Magnetic GPS TNC M - RG174 - 800mm

## Simple GNSS

Magnetic

### FEATURES

- Frequency: (GPS)1575,42MHz
- Gain: 28dB
- Connector and cable: different options available (see ordering information)
- Dimensions: 37.4 x 34 x 12.9 mm



### ORDERING INFORMATION

**199900426** MTX-Antenna Magnetic Trimble GPS 28dB 3V SMA M - RG174 - 5m (66800-52)  
**199900459** MTX-Antenna Magnetic Trimble GPS 28dB 5V SMA M - RG174 - 5m (66800-40)

## Simple GNSS

Magnetic/Adhesive

### FEATURES

- Frequency: (GPS)1575,42MHz/(GLONASS)1602MHz
- Gain: 28dB
- Connector and cable: different options available (see ordering information)
- Dimensions: 40 x 40 x 13 mm



### ORDERING INFORMATION

**118016135** MTX-Antenna Magnetic/Adhesive OPN450 GPS/GLO Fakra C Jack-F - RG174 - 2m  
**118016189** MTX-Antenna Magnetic/Adhesive OPN450 GPS/GLO Fakra C Jack-F - RG174 - 3m

## Simple GNSS

Magnetic/Adhesive

### FEATURES

- Frequency: (GPS)1575,42MHz
- Gain: 1.8dB
- Connector and cable: different options available (see ordering information)
- Dimensions: 41 x 34 x 14 mm



### ORDERING INFORMATION

**118016141** MTX-Antenna Magnetic/Adhesive OPN4D01MP GPS-GLOPassive SMA M - RG174 - 1m  
**118016172** MTX-Antenna Magnetic/Adhesive OPN4D01MP GPS-GLOPassive SMA M - RG174 - 3m

## Simple GNSS

Patch

### FEATURES

- Frequency: (GPS)1575,42MHz
- Gain: 24dB
- Connector and cable: different options available (see ordering information)
- Dimensions: 25 x 25 x 4 mm



### ORDERING INFORMATION

**118016058** MTX-Antenna Patch OPN401 GPS-GLO 25x25 U.FL - 155mm

## Simple GNSS

Patch

### FEATURES

- Frequency: (GPS)1575,42MHz
- Gain: 24dB
- Connector and cable: different options available (see ordering information)
- Dimensions: 13.5 x 13.5 x 8.4 mm



### ORDERING INFORMATION

**118016138** MTX-Antenna Patch OPNM013 GPS 15db13.5x13.5 MHF4 - 100mm  
**118016149** MTX-Antenna Patch OPNM013 GPS 15db13.5x13.5 MHF4 - 37mm  
**118016161** MTX-Antenna Patch OPNM013 GPS 15db13.5x13.5 MHF4 0.81 - 45mm  
**118016162** MTX-Antenna Patch OPNM013 GPS 15db13.5x13.5 MHF4L 1.37 - 45mm

## Simple GNSS

Screwed Esfera

### FEATURES

- Frequency: (GPS)1575,42MHz
- Gain: 30dB
- Connector and cable: different options available (see ordering information)
- Dimensions: 24.6 x ø54.4 mm



### ORDERING INFORMATION

**118009358** MTX-Antenna Screwed ESFERA IP67 GPS SMA F  
**118009357** MTX-Antenna Screwed ESFERA IP67 GPS SMA M - RG174 - 2m

## Simple GNSS

Screwed

### FEATURES

- Frequency: (GPS)1575,42MHz
- Gain: 28dB
- Connector and cable: different options available (see ordering information)
- Dimensions: 17.5 x ø52 mm



### ORDERING INFORMATION

**118016025** MTX-Antenna Screwed OPN4101B GPS SMB F - RG174 - 2.5m

## Simple GNSS

Screwed

### FEATURES

- Frequency: (GPS)1575,42MHz/(GLONASS)1602MHz/(Galileo)1278.75MHz
- Gain: 28dB
- Connector and cable: different options available (see ordering information)
- Dimensions: 17.5 x ø52 mm



### ORDERING INFORMATION

**118016206** MTX-Antenna Screwed OPN4701 GPS-GLO SMA M - LL100 - 5m  
**118016223** MTX-Antenna Screwed SortStroke OPN4701 GPS-GLO SMA M - LL100 - 1.1m  
**118016151** MTX-Antenna Screwed OPN4701 GPS-GLO SMA M - RG174 -1.5m

## Simple GNSS

Screwed

### FEATURES

- Frequency: (GPS)1575,42MHz/(GLONASS)1602MHz
- Gain: 28dB
- Connector and cable: different options available (see ordering information)
- Dimensions: 15.3 x ø60 mm



### ORDERING INFORMATION

**118016247** MTX-Antenna Screwed SS OPN4701 GPS-GLO SMA M - LL100 - 1.1m

## Simple GNSS

Stub

### FEATURES

- Frequency: (GPS)1575,42MHz
- Gain: 18dB
- Connector and cable: different options available (see ordering information)
- Dimensions: 57 x 9.3 mm



### ORDERING INFORMATION

**118013005** MTX-Antenna STUB GPS Active SMA M  
**118013001** MTX-Antenna STUB GPS Active SMA M R/A

## Simple GNSS

Stub

### FEATURES

- Frequency: (GPS)1575,42MHz/(GLONASS)1602MHz/(BeiDou)1176,45MHz
- Gain: 28dB
- Connector and cable: different options available (see ordering information)
- Dimensions: 73 x ø15.7 mm



### ORDERING INFORMATION

**118016180** MTX-Antenna STUB OPN08 GPS/GLO/BeiDou Active 28dB SMA M  
**118016186** MTX-Antenna STUB OPN08 GPS/GLO/BeiDou Active 28dB SMA M R/A

## Simple GNSS

Stubby

### FEATURES

- Frequency: (GPS)1575,42MHz
- Gain: 26dB
- Connector and cable: different options available (see ordering information)
- Dimensions: 67x 18.5 mm



### ORDERING INFORMATION

**118012165** MTX-Antenna STUBBY GPS Active SMA M 26dB 3Vcc  
**118012164** MTX-Antenna STUBBY GPS Active SMA M R/A 26dB 3Vcc



## Simple GNSS Precision

Pole (Bullet)

### FEATURES

- Frequency: (GPS)1575,42MHz/(GLONASS)1602MHz/(BeiDou)1176,45MHz/(Galileo) 1278.75MHz
- Gain: (3V): 26dB; (5V): 28dB
- Connector and cable: different options available (see ordering information)



### ORDERING INFORMATION

**199900525** MTX-Antenna BULLET 360T Trimble GPS-Glonass-Galileo-Beidou 30dB 3-5V F F  
**199900524** MTX-Antenna BULLET 360T Trimble GPS-Glonass-Galileo-Beidou 30dB 3-5V TNC F (101898-00)

## Simple GNSS Precision

Pole (Bullet)

### FEATURES

- Frequency: (GPS)1575,42MHz Dual Band (L1 & L2)
- Gain: (3.3V): 32dB; (5V): 36dB
- Connector and cable: different options available (see ordering information)
- Dimensions: 66.2 x ø77.5 mm



### ORDERING INFORMATION

**199900521** MTX-Antenna Bullet DB Trimble GPS L1 L2 35dB 3V TNC F (94859-00)  
**199900520** MTX-Antenna Bullet DB Trimble GPS L1 L2 35dB 5V TNC F (94860-00)

## Simple GNSS Precision

Screwed

### FEATURES

- Frequency: (GPS)1575,42MHz
- Gain: 26dB
- Connector and cable: different options available (see ordering information)
- Dimensions: 44 x ø64.5 mm



### ORDERING INFORMATION

**199900451** MTX-Antenna Screwed GPS 26dB 3V TNC F (Trimble Bulkhead 70228-00)  
**199900449** MTX-Antenna Screwed GPS 26dB 5V TNC F (Trimble Bulkhead 70228-70)

## Simple WiFi

Adhesive Blade Middle

### FEATURES

- Frequency: 2,4/5GHz
- Gain: 2.5dBi
- Connector and cable: different options available (see ordering information)
- Dimensions: 110 x 18 mm



### ORDERING INFORMATION

<b>118009279</b>	MTX-Antenna Adhesive BLADEMID 2.4/5GHz SMA M - RG174 - 3m
<b>118009324</b>	MTX-Antenna Adhesive BLADEMID 2.4/5GHz SMA M RP - RG174 - 1m
<b>118009232</b>	MTX-Antenna Adhesive BLADEMID 2.4/5GHz SMA M RP - RG174 - 3m

## Simple WiFi

Internal

### FEATURES

- Frequency: 2,4/5GHz
- Gain: 1.2dBi
- Connector and cable: different options available (see ordering information)
- Dimensions: 39.6 x 8.4 x 0.1 mm



### ORDERING INFORMATION

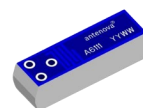
<b>118016065</b>	MTX-Antenna Internal OPNMA505c 2.4/5GHz U.FL - 150 mm
------------------	---

## Simple WiFi

Internal PCB

### FEATURES

- Frequency: 2,4GHz
- Gain: 0dBi
- Connector and cable: different options available (see ordering information)
- Dimensions: 12.8 x 3.6 x 3.3 mm



### ORDERING INFORMATION

<b>118011004</b>	MTX-Antenna Internal PCB Comata 2.4GHz
------------------	--

## Simple WiFi

Internal PCB

### FEATURES

- Frequency: 2,4/5GHz
- Gain: 3dBi
- Connector and cable: different options available (see ordering information)
- Dimensions: 11.3 x 5 x 0.8 mm



### ORDERING INFORMATION

**118011032** MTX-Antenna Internal PCB MUTICA 2.4-5 GHz 11.3x5x0.8mm (SR42W001)

## Simple WiFi

Internal PCB

### FEATURES

- Frequency: 2,4/5GHz
- Gain: 4.1dBi
- Connector and cable: different options available (see ordering information)
- Dimensions: 10 x 10 x 0.9 mm



### ORDERING INFORMATION

**118011027** MTX-Antenna Internal PCB SMD MIXTUS 2.4/5GHz

## Simple WiFi

Magnetic

### FEATURES

- Frequency: 2,4/5GHz
- Gain: 2.3dBi
- Connector and cable: different options available (see ordering information)
- Dimensions: 14.3 x ø52.5 mm



### ORDERING INFORMATION

**118016082** MTX-Antenna Magnetic OPN6302 2.4/5GHz 2/5dBi SMA M - RG174 - 2m

## Simple WiFi

### Magnetic Stub

#### FEATURES

- Frequency: 2,4GHz
- Gain: 2dBi
- Connector and cable: different options available (see ordering information)
- Dimensions: 100 x ø34 mm



#### ORDERING INFORMATION

<b>118007023</b>	MTX-Antenna Magnetic STUB L10 2.4GHz 2dbi SMA M - RG174 - 2m
<b>118007031</b>	MTX-Antenna Magnetic STUB L10 2.4GHz 2dbi SMA M RP - RG174 - 3m
<b>118007042</b>	MTX-Antenna Magnetic STUB L10 2.4GHz 2dbi SMA M RP R/A - RG174 - 1.5m
<b>118007041</b>	MTX-Antenna Magnetic STUB L10 2.4GHz 2dbi SMA M RP R/A - RG174 - 3m

## Simple WiFi

### Magnetic Stub

#### FEATURES

- Frequency: 2,4GHz
- Gain: 1.6dBi
- Connector and cable: different options available (see ordering information)
- Dimensions: 71,5 x ø31 mm



#### ORDERING INFORMATION

<b>118016152</b>	MTX-Antenna Magnetic STUB OPN3702 L7 2.4GHz 2dbi SMA M RP R/A - RG174 - 3m
------------------	--

## Simple WiFi

### Omni Fiberglass - outdoor

#### FEATURES

- Frequency: 2,4GHz
- Gain: 15dBi
- Connector and cable: different options available (see ordering information)
- Dimensions: 1485 mm



#### ORDERING INFORMATION

<b>118009165</b>	MTX-Antenna Omni FIBERGLASS 2.4GHz 15dbi N F
------------------	--

## Simple WiFi

Panel

### FEATURES

- Frequency: 2,4GHz
- Gain: 15dBi
- Connector and cable: different options available (see ordering information)
- Dimensions: 230 x 230 x 20 mm



### ORDERING INFORMATION

**118009265** MTX-Antenna PANEL 2.4GHz 15dbi N F

## Simple WiFi

Panel

### FEATURES

- Frequency: 2,4GHz
- Gain: 13dBi
- Connector and cable: different options available (see ordering information)
- Dimensions: 170 x 145 x 22 mm



### ORDERING INFORMATION

**118009087** MTX-Antenna PANEL 2.4GHz N F 13dBi

## Simple WiFi

Panel

### FEATURES

- Frequency: 2,4/5GHz
- Gain: 18dBi
- Connector and cable: different options available (see ordering information)
- Dimensions: 240 x 240 x 60 mm



### ORDERING INFORMATION

**118010128** MTX-Antenna PANEL WLAN 2.4/5GHz 18dBi SMA F

## Simple WiFi

### Screwed Button

#### FEATURES

- Frequency: 2,4/5GHz
- Gain: 5.1dBi
- Connector and cable: different options available (see ordering information)
- Dimensions: 33.5 x ø106 mm



#### ORDERING INFORMATION

**118012427** MTX-Antenna Screwed Button WiFi6 2.4/ 5.5/5.9 GHz SMA M RP - RG174 - 1m

## Simple WiFi

### Screwed

#### FEATURES

- Frequency: 2,4/5GHz
- Gain: 5dBi
- Connector and cable: different options available (see ordering information)
- Dimensions: 33.5 x ø106 mm



#### ORDERING INFORMATION

**118012130** MTX-Antenna Screwed CPW 2.4/5GHz 2/3dbi SMA M RP - RG174 - 2m

## Simple WiFi

### Screwed Esfera

#### FEATURES

- Frequency: 2,4/5GHz
- Gain: 3dBi
- Connector and cable: different options available (see ordering information)
- Dimensions: 23 x ø53 mm



#### ORDERING INFORMATION

**118009161** MTX-Antenna Screwed ESFERA 2.4/5.2GHz SMA M RP - RG174 - 2m

## Simple WiFi

Screwed

### FEATURES

- Frequency: 2,4GHz
- Gain: 0dBi
- Connector and cable: different options available (see ordering information)
- Dimensions: 75 x ø53.5 mm



### ORDERING INFORMATION

<b>118009082</b>	MTX-Antenna Screwed M66 2.4GHz SMA F (BH) - RG316 - 5m
<b>118009124</b>	MTX-Antenna Screwed M66 2.4GHz SMA M - RG316 - 5m
<b>118009084</b>	MTX-Antenna Screwed M66 2.4GHz SMA M RP - RG316 - 5m

## Simple WiFi

Screwed

### FEATURES

- Frequency: 2,4/5GHz
- Gain: 4.9dBi
- Connector and cable: different options available (see ordering information)
- Dimensions: 15 x ø77.3 mm



### ORDERING INFORMATION

<b>118016090</b>	MTX-Antenna Screwed OPN662 2.4/5GHz 5dbi SMA M RP - RG174 - 1.5m
<b>118016136</b>	MTX-Antenna Screwed OPN662 2.4/5GHz 5dbi SMA M RP - RG174 - 1m
<b>118016084</b>	MTX-Antenna Screwed OPN662 2.4/5GHz 5dbi SMA M RP - RG174 - 5m

## Simple WiFi

Screwed

### FEATURES

- Frequency: 2,4GHz
- Gain: 3.8dBi
- Connector and cable: different options available (see ordering information)
- Dimensions: 15.3 x ø60 mm



### ORDERING INFORMATION

<b>118016057</b>	MTX-Antenna Screwed OPN7402 2.4GHz SMA M - RG174 - 5m
------------------	---

## Simple WiFi

### Screwed RoofBall

#### FEATURES

- Frequency: 2,4GHz
- Gain: 2dBi
- Connector and cable: different options available (see ordering information)
- Dimensions: 53 x 30 x 30 mm



#### ORDERING INFORMATION

**118009155** MTX-Antenna Screwed ROOFBALL 2.4GHz SMA M RP - RG174 - 4m  
**118009310** MTX-Antenna Screwed ROOFBALL 2.4GHz U.FL 1.37 - 50mm

## Simple WiFi

### Stubby

#### FEATURES

- Frequency: 2,4GHz
- Gain: 0dBi
- Connector and cable: different options available (see ordering information)
- Dimensions: 36 x 17.5 mm



#### ORDERING INFORMATION

**118012018** MTX-Antenna STUBBY BT 2.4GHz SMA M  
**118012095** MTX-Antenna STUBBY BT 2.4GHz SMA M RP  
**118012106** MTX-Antenna STUBBY BT 2.4GHz SMA M RP R/A

## Simple WiFi

### Stub

#### FEATURES

- Frequency: 2,4/5GHz
- Gain: 5dBi
- Connector and cable: different options available (see ordering information)
- Dimensions: 115 x 15 x 18 mm



#### ORDERING INFORMATION

**118009055** MTX-Antenna STUBDUCKSW 2.4/5.8GHz 3/5dbi SMA M RP  
**118009135** MTX-Antenna STUBDUCKSW 2.4/5.8GHz 3/5dbi SMA M RP



## Simple WiFi

Stub

### FEATURES

- Frequency: 2,4/5/6GHz
- Gain: 5dBi
- Connector and cable: different options available (see ordering information)
- Dimensions: 203.2 x 12.7 mm



### ORDERING INFORMATION

**118012431** MTX-Antenna STUBFLATSW 2.4/5/6GHz 5dBi SMA M RP

## Simple WiFi

Stub

### FEATURES

- Frequency: 2,4/5GHz
- Gain: 2dBi
- Connector and cable: different options available (see ordering information)
- Dimensions: 99.5 x 11 mm



### ORDERING INFORMATION

**118012230** MTX-Antenna STUBFLATSW 2.4/5GHz 2dBi SMA M  
**118012241** MTX-Antenna STUBFLATSW 2.4/5GHz 2dBi SMA M RP

## Simple WiFi

Stub

### FEATURES

- Frequency: 2,4GHz
- Gain: 2dBi
- Connector and cable: different options available (see ordering information)
- Dimensions: 108 x 9.3 mm



### ORDERING INFORMATION

**118009256** MTX-Antenna STUBSW 2.4GHz 2dbi SMA M  
**118009250** MTX-Antenna STUBSW 2.4GHz 2dbi SMA M RP

## Simple WiFi

### Stub

#### FEATURES

- Frequency: 2,4GHz
- Gain: 5dBi
- Connector and cable: different options available (see ordering information)
- Dimensions: 190 x 12.7 mm



#### ORDERING INFORMATION

**118009238** MTX-Antenna STUBSW 2.4GHz 5dbi SMA M RP

## Simple WiFi

### Magnetic Stub

#### FEATURES

- Frequency: 2,4GHz
- Gain: 5dBi
- Connector and cable: different options available (see ordering information)
- Dimensions: 190 x 12.7 mm



#### ORDERING INFORMATION

**118009239** MTX-Antenna STUBSW 2.4GHz 5dbi SMA M RP + MagneticBase SMA M RP - RG174 - 2m

## Simple WiFi

### Magnetic Stub

#### FEATURES

- Frequency: 2,4GHz
- Gain: 7dBi
- Connector and cable: different options available (see ordering information)
- Dimensions: 245 mm



#### ORDERING INFORMATION

**118009094** MTX-Antenna STUBSW 2.4GHz 7dbi SMA M RP + MagneticBase SMA M RP - RG174 - 2m

## Simple WiFi

### Stub

#### FEATURES

- Frequency: 2,4GHz
- Gain: 9dBi
- Connector and cable: different options available (see ordering information)
- Dimensions: 380 mm



#### ORDERING INFORMATION

**118009276** MTX-Antenna STUBSW 2.4GHz 9dbi SMA M RP

## Simple WiFi

### Magnetic Stub

#### FEATURES

- Frequency: 2,4GHz
- Gain: 9dBi
- Connector and cable: different options available (see ordering information)
- Dimensions: 380 mm



#### ORDERING INFORMATION

**118009095** MTX-Antenna STUBSW 2.4GHz 9dbi SMA M RP + MagneticBase SMA M RP - RG174 - 2m

## Simple WiFi

### Stub

#### FEATURES

- Frequency: 2,4/5GHz
- Gain: 1.5dBi
- Connector and cable: different options available (see ordering information)
- Dimensions: 113 x 10 mm



#### ORDERING INFORMATION

**118016192** MTX-Antenna STUBSW OPNW032 2.4/5GHz 2.3/0.8 dBi SMA M RP

## Simple WiFi

Stub

### FEATURES

- Frequency: 2,4/5GHz
- Gain: 3.2dBi
- Connector and cable: different options available (see ordering information)
- Dimensions: 76 x ø10 mm



### ORDERING INFORMATION

**118016096** MTX-Antenna STUBSW OPNW035 2.4/5GHz 1.4/3.2dbi SMA M RP

## Simple WiFi

Stub

### FEATURES

- Frequency: 2,4/5GHz
- Gain: 5dBi
- Connector and cable: different options available (see ordering information)
- Dimensions: 163 x 22 mm



### ORDERING INFORMATION

**118010309** MTX-Antenna STUBSW PWB 2.4/5GHz 3/5dbi SMA M RP (PWB-24-58-RSMARV)

## Simple WiFi

Tunnel (circular polarization)

### FEATURES

- Frequency: 2,4/5GHz
- Gain: 14.5dBic (directional)
- Connector and cable: different options available (see ordering information)
- Dimensions: 2004 x 116 x 142 mm



### ORDERING INFORMATION

**118010109** MTX-Antenna TUNNEL Bidireccional HELI-8 2.4/2.5GHz 14dBi N F

## Simple WiFi

Tunnel (circular polarization)

### FEATURES

- Frequency: 2,4/5GHz
- Gain: 11dBic (directional)
- Connector and cable: different options available (see ordering information)
- Dimensions: 631 x 143 x 116 mm



### ORDERING INFORMATION

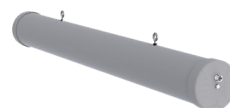
**118010121** MTX-Antenna TUNNEL HELI-19 2.4/5GHz 9/11dBi N F

## Simple WiFi

Tunnel (circular polarization)

### FEATURES

- Frequency: 2,4/5GHz
- Gain: 17.5dBic (directional)
- Connector and cable: different options available (see ordering information)
- Dimensions: 1040 x 145 x 120 mm



### ORDERING INFORMATION

**118010107** MTX-Antenna TUNNEL HELI-3 2.4/2.5GHz 17.5dBi N F

## Simple WiFi

Tunnel (circular polarization)

### FEATURES

- Frequency: 2,4/5GHz
- Gain: 14.5 dBic (directional)
- Connector and cable: different options available (see ordering information)
- Dimensions: 420 x 145 x 120 mm



### ORDERING INFORMATION

**118010108** MTX-Antenna TUNNEL HELI-4 2.4/2.5GHz 15dBi N F

## Simple WiFi

Yagi

### FEATURES

- Frequency: 2,4GHz
- Gain: 7dBi
- Connector and cable: different options available (see ordering information)
- Dimensions: 300 mm



### ORDERING INFORMATION

**118007001** MTX-Antenna YAGI 2.4GHz 7dBi SMA M RP - LMR195 - 6m

## Simple WiFi

Internal

### FEATURES

- Frequency: 2,4/5/6GHz
- Gain: 3.6dBi
- Connector and cable: different options available (see ordering information)
- Dimensions: 39.6 x 8.4 x 1.49 mm



### ORDERING INFORMATION

**118016106** MTX-Antenna Internal OPNF0102 2.4/5GHz Bottom U.FL - 150mm  
**118016221** MTX-Antenna Internal OPNF0102 2.4/5GHz Bottom U.FL - 580mm  
**118016064** MTX-Antenna Internal OPNF0102 2.4/5GHz U.FL - 150 mm

## MIMO WiFi

Adhesive

### FEATURES

- Frequency: 2,4/5GHz
- Gain: 5.3dBi
- Connector and cable: different options available (see ordering information)
- Dimensions: 80 x 76 x 16



### ORDERING INFORMATION

**118016130** MTX-Antenna Adhesive OPN6002 Mimo 2.4/5GHz 2xSMA M RP - LMR100 - 3m  
**118016218** MTX-Antenna Adhesive OPN6002 Mimo 2.4/5GHz 2xSMA M RP - D302 - 3m

## MIMO WiFi

Screwed

### FEATURES

- Frequency: 2,4/5GHz
- Gain: 9dBi
- Connector and cable: different options available (see ordering information)
- Dimensions: 30 x ø115 mm



### ORDERING INFORMATION

<b>118010307</b>	MTX-Antenna Screwed CM2 Mimo 2.4/5GHz x 2 SMA F- CS32 - 300mm
<b>118010301</b>	MTX-Antenna Screwed CM2 Mimo 2.4/5GHz x 2 SMA M RP - CS32 - 2m
<b>118010302</b>	MTX-Antenna Screwed CM4 Mimo 2.4/5GHz 6/9dBi x 4 SMA M RP - CS32 - 2m

## MIMO WiFi

Screwed

### FEATURES

- Frequency: 2,4/5GHz
- Gain: 4dBi
- Connector and cable: different options available (see ordering information)
- Dimensions: 33.5 x ø102 mm



### ORDERING INFORMATION

<b>118012540</b>	MTX-Antenna Screwed CPW Mimo 2.4/5GHz 2xSMA M RP - RG174 - 1m
<b>118012372</b>	MTX-Antenna Screwed CPW Mimo 2.4/5GHz 2xSMA M RP - RG174 - 2m
<b>118012373</b>	MTX-Antenna Screwed CPW Mimo 2.4/5GHz 2xSMA M RP R/A - RG174 - 2m

## MIMO WiFi

Screwed

### FEATURES

- Frequency: 2,4/5GHz
- Gain: 4.4dBi
- Connector and cable: different options available (see ordering information)
- Dimensions: 66.5 x ø77.3 mm



### ORDERING INFORMATION

<b>118016108</b>	MTX-Antenna Screwed OPN6A02Ba Mimo 2.4/5GHz 2xSMA M RP R/A- LMR100 - 2m
------------------	---

## Combi GNSS + WiFi

Screwed

### FEATURES

- Frequency: (GPS)1575,42MHz/(GLONASS)1602MHz + 2,4/5GHz
- Gain: (GNSS)28dB; (WIFI)3dBi
- Connector and cable: different options available (see ordering information)
- Dimensions: 15 x ø77.3 mm



### ORDERING INFORMATION

**118016252** MTX-Antenna Screwed OPN6603 (GPS-GLO SMA M)+(2.4-5GHz SMA M) LL100 - 5m

## Combi GNSS + TETRA

Magnetic

### FEATURES

- Frequency: (GPS)1575,42MHz + 380-400MHz
- Gain: (4G)0dBi; (GNSS)23dB
- Connector and cable: different options available (see ordering information)
- Dimensions: 30 x ø135.5 mm



### ORDERING INFORMATION

**118016059** MTX-Antenna Magnetic OPN650 (GPS-GLO SMA M) + (TETRA TNC M) - RG58 -3m

## Combi GNSS + TETRA

Screwed

### FEATURES

- Frequency: (GPS)1575,42MHz + 380-400MHz
- Gain: (GNSS)26dB; (TETRA)0dBi
- Connector and cable: different options available (see ordering information)
- Dimensions: 186.5 x 63 mm



### ORDERING INFORMATION

**118016227** MTX-Antenna Screwed OPN7807BG (GPS SMA M) + (TETRA TNC M) - LL100 - 1.5m  
**118016066** MTX-Antenna Screwed OPN7807BG (GPS SMA M) + (TETRA TNC M) - RG174 - 1.5m



## Combi GNSS + TETRA

Screwed

### FEATURES

- Frequency: (GPS)1575,42MHz + 380-400MHz
- Gain: (GNSS)26dB; (TETRA)2dBi
- Connector and cable: different options available (see ordering information)
- Dimensions: 99 x 60 x 154 mm



### ORDERING INFORMATION

**118016068** MTX-Antenna Screwed OPN8407BGF (GPS SMA M) + (TETRA TNC M) - LL100 - 5m

## Simple ISM 169

Magnetic Whip

### FEATURES

- Frequency: 169MHz
- Gain: 2dBi
- Connector and cable: different options available (see ordering information)
- Dimensions: 450 x 12.7 x ø50.7 mm



### ORDERING INFORMATION

**118009336** MTX-Antenna Magnetic Whip L46 169MHz SMA M - RG174 - 5m

## Simple ISM 169

Omni Fiberglass - outdoor

### FEATURES

- Frequency: 169MHz
- Gain: 2dBi
- Connector and cable: different options available (see ordering information)
- Dimensions: 480 mm



### ORDERING INFORMATION

**118012190** MTX-Antenna Omni FIBERGLASS 169MHz 2dBi N F

## Simple ISM 169

Whip

### FEATURES

- Frequency: 169MHz
- Gain: 0dBi
- Connector and cable: different options available (see ordering information)
- Dimensions: 140 x 13.5 mm



### ORDERING INFORMATION

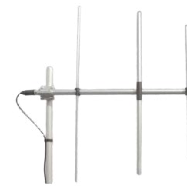
**118012168** MTX-Antenna Whip H 169MHz SMA M

## Simple ISM 169

Yagi

### FEATURES

- Frequency: 169MHz
- Gain: 7dBi
- Connector and cable: different options available (see ordering information)
- Dimensions: 990 x 985 mm



### ORDERING INFORMATION

**600005018** MTX-Antenna YAGI 169MHz 7dBi N F

## Simple ISM 169

Yagi

### FEATURES

- Frequency: 169MHz
- Gain: 8.5dBi
- Connector and cable: different options available (see ordering information)
- Dimensions: 1600 x 985 mm



### ORDERING INFORMATION

**600005012** MTX-Antenna YAGI 169MHz 8.5dBi N F

## Simple ISM 433

Adhesive

### FEATURES

- Frequency: 433MHz
- Gain: 2.4dBi
- Connector and cable: different options available (see ordering information)
- Dimensions: 60 x 112.5 x 11.3 mm



### ORDERING INFORMATION

**118016142** MTX-Antenna Adhesive OPN5415 433MHz - RG174 - 2m

## Simple ISM 433

Omni Fiberglass - outdoor

### FEATURES

- Frequency: 433MHz
- Gain: 2.15dBi
- Connector and cable: different options available (see ordering information)
- Dimensions: 780 x ø35 mm



### ORDERING INFORMATION

**600005011** MTX-Antenna Omni FIBERGLASS 433-470 MHz 2dBi N F - RG58 - 5m

## Simple ISM 433

Stub

### FEATURES

- Frequency: 433MHz
- Gain: 0dBi
- Connector and cable: different options available (see ordering information)
- Dimensions: 80 x 5.5 mm



### ORDERING INFORMATION

**118007027** MTX-Antenna STUB 433MHz SMA M  
**118007026** MTX-Antenna STUB 433MHz SMA M R/A

## Simple ISM 433

Stub

### FEATURES

- Frequency: 433MHz
- Gain: 0dBi
- Connector and cable: different options available (see ordering information)
- Dimensions: 56 x ø9.5 mm



### ORDERING INFORMATION

**118016153** MTX-Antenna STUB L05 OPN0115White 433MHz SMA M

## Simple ISM 433

Stub

### FEATURES

- Frequency: 433MHz
- Gain: 0.5dBi
- Connector and cable: different options available (see ordering information)
- Dimensions: 137.3 x ø15.7 mm



### ORDERING INFORMATION

**118016210** MTX-Antenna Stub OPNW815 433MHz 3dBi SMA M

## Simple ISM 433

Whip

### FEATURES

- Frequency: 433MHz
- Gain: 0dBi
- Connector and cable: different options available (see ordering information)
- Dimensions: 170 mm



### ORDERING INFORMATION

**118012234** MTX-Antenna Whip 433MHz - SMA M

## Simple ISM 433

Yagi

### FEATURES

- Frequency: 433MHz
- Gain: 11dBi
- Connector and cable: different options available (see ordering information)
- Dimensions: 1130 x 375 mm



### ORDERING INFORMATION

**600005010** MTX-Antenna YAGI 433-470MHz 11dBi N F

## Simple ISM 433

Yagi

### FEATURES

- Frequency: 433MHz
- Gain: 5dBi
- Connector and cable: different options available (see ordering information)
- Dimensions: 400 x 365 mm



### ORDERING INFORMATION

**118006102** MTX-Antenna YAGI 433MHz 5dBi N F - RG58 - 1m

## Simple ISM 868

Magnetic Whip

### FEATURES

- Frequency: 868MHz
- Gain: 5dBi
- Connector and cable: different options available (see ordering information)
- Dimensions: 329 x ø75 mm



### ORDERING INFORMATION

**118009361** MTX-Antenna Magnetic Whip L30 Lora/868MHz 5dBi SMA M - RG58 - 3m

## Simple ISM 868

Omni Fiberglass - outdoor

### FEATURES

- Frequency: 868MHz
- Gain: 9dBi
- Connector and cable: different options available (see ordering information)
- Dimensions: 1340 mm



### ORDERING INFORMATION

**118009211** MTX-Antenna Omni FIBERGLASS LoRa/868MHz 9dBi N F

## Simple ISM 868

Omni Fiberglass - outdoor

### FEATURES

- Frequency: 868MHz
- Gain: 4.3dBi
- Connector and cable: different options available (see ordering information)
- Dimensions: 500 x ø35 mm



### ORDERING INFORMATION

**600005031** MTX-Antenna Omni FIBERGLASS SCO LoRa/868MHz 4.3dBi N F  
**600005032** MTX-Antenna Omni FIBERGLASS SCO LoRa/868MHz 4.3dBi N M

## Simple ISM 868

Omni Fiberglass - outdoor

### FEATURES

- Frequency: 868MHz
- Gain: 6.2dBi
- Connector and cable: different options available (see ordering information)
- Dimensions: 770 x ø35 mm



### ORDERING INFORMATION

**600005030** MTX-Antenna Omni FIBERGLASS SCO LoRa/868MHz 6.2dBi N F

## Simple ISM 868

Screwed

### FEATURES

- Frequency: 868MHz
- Gain: 2dBi
- Connector and cable: different options available (see ordering information)
- Dimensions: 15 x  $\varnothing$ 77.3 mm



### ORDERING INFORMATION

**118016225** MTX-Antenna Screwed OPN6615B LoRa/868MHz 3.8dBi SMA M - LL100 - 2m

## Simple ISM 868

Stub

### FEATURES

- Frequency: 868MHz
- Gain: 0.2dBi
- Connector and cable: different options available (see ordering information)
- Dimensions: 113 x  $\varnothing$ 10 mm



### ORDERING INFORMATION

**118016126** MTX-Antenna STUBSW OPNW031 868MHz 2dBi SMA M RP  
**118016076** MTX-Antenna STUBSW OPNW031 LoRa/868MHz 2dBi SMA M

## Simple ISM 868

Internal

### FEATURES

- Frequency: 868MHz
- Gain: 0.8dBi
- Connector and cable: different options available (see ordering information)
- Dimensions: 40 x 7 x 0.2 mm



### ORDERING INFORMATION

**118016112** MTX-Antenna Internal OPNF0115P 868MHz U.FL - 120mm

## Simple ISM 868

Magnetic Whip

### FEATURES

- Frequency: 868MHz
- Gain: 2.6dBi
- Connector and cable: different options available (see ordering information)
- Dimensions: 91 x ø30.9 mm



### ORDERING INFORMATION

**118016085** MTX-Antenna Magnetic Whip OPN3015M 868MHz SMA M - RG174 - 5m

## Simple ISM 868

Panel

### FEATURES

- Frequency: 868MHz
- Gain: 8dBi
- Connector and cable: different options available (see ordering information)
- Dimensions: 228 x 193 x 39 mm



### ORDERING INFORMATION

**118009191** MTX-Antenna PANEL 868MHz 8dBi N F

## Simple ISM 868

Panel

### FEATURES

- Frequency: 868MHz
- Gain: 8.5dBi
- Connector and cable: different options available (see ordering information)
- Dimensions: 190 x 190 x 25 mm



### ORDERING INFORMATION

**118013552** MTX-Antenna PANEL ATA 868MHz 8dBi N F



## Simple ISM 868

Stub

### FEATURES

- Frequency: 868MHz
- Gain: 2dBi
- Connector and cable: different options available (see ordering information)
- Dimensions: 54 x 8 mm



### ORDERING INFORMATION

**118007012** MTX-Antenna Stub 868MHz SMA M  
**118007011** MTX-Antenna Stub 868MHz SMA M R/A

## Simple ISM 868

Stub Screwed

### FEATURES

- Frequency: 868MHz
- Gain: 2dBi
- Connector and cable: different options available (see ordering information)
- Dimensions: 88 mm



### ORDERING INFORMATION

**118009262** MTX-Antenna STUB Screwed 868MHz 2dBi - Cable U.FL 1.13 - 150mm

## Simple ISM 868

Stub Screwed

### FEATURES

- Frequency: 868MHz
- Gain: 0dBi
- Connector and cable: different options available (see ordering information)
- Dimensions: 50 x ø16 mm



### ORDERING INFORMATION

**118016125** MTX-Antenna STUB Screwed OPN1015 868MHz SMA M - RG174 - 1m

## Simple ISM 868

Stub

### FEATURES

- Frequency: 868MHz
- Gain: 1dBi
- Connector and cable: different options available (see ordering information)
- Dimensions: 54 x 8 mm



### ORDERING INFORMATION

**118012070** MTX-Antenna STUB WR868 868Mhz SMA M R/A

## Simple ISM 868

Stub

### FEATURES

- Frequency: 868MHz
- Gain: 3dBi
- Connector and cable: different options available (see ordering information)
- Dimensions: 112 mm



### ORDERING INFORMATION

**118009157** MTX-Antenna STUBSW 868MHz 3dBi SMA M

## Simple ISM 868

Stub

### FEATURES

- Frequency: 868MHz
- Gain: 5dBi
- Connector and cable: different options available (see ordering information)
- Dimensions: 270 x 12 mm



### ORDERING INFORMATION

**118009151** MTX-Antenna STUBSW 868MHz 5dBi SMA M

## Simple ISM 868

Stub Screwed

### FEATURES

- Frequency: 868MHz
- Gain: 3dBi
- Connector and cable: different options available (see ordering information)
- Dimensions: 187 mm



### ORDERING INFORMATION

**118009278** MTX-Antenna STUBSW Screwed 868MHz 3dBi - Cable U.FL 1.13 - 150mm

## Simple ISM 868

Stub Screwed

### FEATURES

- Frequency: 868MHz
- Gain: 5dBi
- Connector and cable: different options available (see ordering information)
- Dimensions: 270 x 12 mm



### ORDERING INFORMATION

**118009188** MTX-Antenna STUBSW Screwed 868MHz 5dBi + cable 127mm - U.FL

## Simple ISM 868

Whip

### FEATURES

- Frequency: 868MHz
- Gain: 0dBi
- Connector and cable: different options available (see ordering information)
- Dimensions: 84 x 14.5 mm



### ORDERING INFORMATION

**118012075** MTX-Antenna Whip External 868MHz SMA M

## Simple ISM 868

Yagi

### FEATURES

- Frequency: 868MHz
- Gain: 7dBi
- Connector and cable: different options available (see ordering information)
- Dimensions: 495 x 290 x 55 mm



### ORDERING INFORMATION

**118006103** MTX-Antenna YAGI 868MHz 7dBi N F - RG58 - 1m  
**118006100** MTX-Antenna YAGI 868MHz 7dBi SMA M - LL195 - 500mm

## Simple ISM 915

Screwed

### FEATURES

- Frequency: 915MHz
- Gain: 2dBi
- Connector and cable: different options available (see ordering information)
- Dimensions: 15 x ø77.3 mm



### ORDERING INFORMATION

**118016118** MTX-Antenna Screwed OPN6615B 915MHz dBi N M - R174 - 3m

## Simple ISM 915

Stub

### FEATURES

- Frequency: 915MHz
- Gain: 2dBi
- Connector and cable: different options available (see ordering information)
- Dimensions: 153 x ø13 mm



### ORDERING INFORMATION

**118009323** MTX-Antenna STUBSW 915MHz 2dBi SMA M

## Simple ISM 915

Stub Screwed

### FEATURES

- Frequency: 915MHz
- Gain: 5dBi
- Connector and cable: different options available (see ordering information)
- Dimensions: 270 x 12 mm



### ORDERING INFORMATION

**118009216** MTX-Antenna STUBSW Screwed 915MHz 5dBi + cable 127mm - U.FL

## Simple ISM 868 / 915

Adhesive Blade

### FEATURES

- Frequency: 868 - 915MHz
- Gain: 3dBi
- Connector and cable: different options available (see ordering information)
- Dimensions: 71 x 25 x 7 mm



### ORDERING INFORMATION

**118016234** MTX-Antenna Adhesive Blade OPN5515 868/915MHz 3dBi SMA M - RG174 - 1m

## Simple ISM 868 / 915

Internal

### FEATURES

- Frequency: 868 - 928MHz
- Gain: 1.9dBi
- Connector and cable: different options available (see ordering information)
- Dimensions: 0.15 x ø66 mm



### ORDERING INFORMATION

**118011039** MTX-Antenna Internal MONTANA 868/928MHz U.FL 1.13 - 100mm

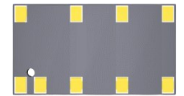
**118011029** MTX-Antenna Internal MONTANA 868/928MHz U.FL 1.13 - 150mm

## Simple ISM 868 / 915

Internal PCB

### FEATURES

- Frequency: 868 - 960MHz
- Gain: 0.8dBi
- Connector and cable: different options available (see ordering information)
- Dimensions: 20 x 11 x 1.6 mm



### ORDERING INFORMATION

**118011035** MTX-Antenna Internal PCB Latona 868-960MHz 20x11x1.6mm (SR4C033)

## Simple ISM 868 / 915

Omni Fiberglass - outdoor

### FEATURES

- Frequency: 868 - 915MHz
- Gain: 6.2dBi
- Connector and cable: different options available (see ordering information)
- Dimensions: 770 x ø35 mm



### ORDERING INFORMATION

**600005014** MTX-Antenna Omni FIBERGLASS SPO LoRa/868/915MHz 6dBi N F  
**600005015** MTX-Antenna Omni FIBERGLASS SPO LoRa/868/915MHz 6dBi SMA M - RF100 - 5m  
**118012359** MTX-Antenna Omni FIBERGLASS 868MHz 5.5dBi SMA M - RG58 - 5m

## Simple ISM 868 / 915

Omni - outdoor

### FEATURES

- Frequency: 870 - 960MHz
- Gain: 5.15dBi
- Connector and cable: different options available (see ordering information)
- Dimensions: 550 mm



### ORDERING INFORMATION

**600005023** MTX-Antenna Omni GPC900 UHF BaseStation 870-960MHz 5,14dBi N Fi

## Simple ISM 868 / 915

Screwed Button

### FEATURES

- Frequency: 868 - 915MHz
- Gain: 1.37dBi
- Connector and cable: different options available (see ordering information)
- Dimensions: 27.5 x ø62.7 mm



### ORDERING INFORMATION

**118012412** MTX-Antenna Screwed Button 868-915MHz SMA M - RG174 - 2m  
**118012414** MTX-Antenna Screwed Button 868-915MHz SMA M RP - RG174 - 2m

## Simple ISM 868 / 915

Screwed

### FEATURES

- Frequency: 868 - 915MHz
- Gain: 4dBi
- Connector and cable: different options available (see ordering information)
- Dimensions: 65.5 x ø77.3 mm



### ORDERING INFORMATION

**118016190** MTX-Antenna Screwed OPN6A42 868/915MHz 4dBi SMA M - LMR100 - 3m

## Simple ISM 868 / 915

Stub

### FEATURES

- Frequency: 868 - 915MHz
- Gain: 2dBi
- Connector and cable: different options available (see ordering information)
- Dimensions: 221 x 13 mm



### ORDERING INFORMATION

**118012429** MTX-Antenna STUBSW BKR Lora/915MHz 2dBi SMA M RP

## Simple RFID 868 / 915

Panel

### FEATURES

- Frequency: 868MHz
- Gain: 8.5dBic
- Connector and cable: different options available (see ordering information)
- Dimensions: 190 x 190 x 25 mm



### ORDERING INFORMATION

**118013550** MTX-Antenna RFID PANEL 19X19cm UHF 868MHz 8dBi - N F

## Simple RFID 868 / 915

Panel

### FEATURES

- Frequency: 868MHz
- Gain: 8.8dBic
- Connector and cable: different options available (see ordering information)
- Dimensions: 250 x 250 x 40 mm



### ORDERING INFORMATION

**118010106** MTX-Antenna RFID PANEL PATCH 25x25cm UHF 868MHz 8dBi N F - LL195 -300mm (with Brk)

## Simple TETRA

Screwed

### FEATURES

- Frequency: 380-400MHz
- Gain: 2dBi
- Connector and cable: different options available (see ordering information)
- Dimensions: 175 x 153 x 59.5 mm



### ORDERING INFORMATION

**118016069** MTX-Antenna Screwed OPN8407BGF - Whip\_Insert TETRA screw M6



## Simple UHF

Yagi

### FEATURES

- Frequency: 400-475MHz
- Gain: 14dBi
- Connector and cable: different options available (see ordering information)
- Dimensions: 2000 x 375 mm



### ORDERING INFORMATION

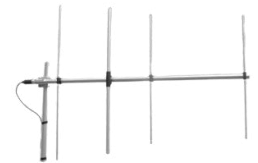
**600005028** MTX-Antenna YAGI UHF 400-475MHz 14 dBi N F

## Simple VHF

Yagi

### FEATURES

- Frequency: 136-174MHz
- Gain: 7.5dBi
- Connector and cable: different options available (see ordering information)
- Dimensions: 1600 x 1120 mm



### ORDERING INFORMATION

**600005027** MTX-Antenna YAGI VHF 136 -174MHz 7.5 dBi N F

## RF Adapter Connectors

### ORDERING INFORMATION

<b>118015043</b>	MTX-RF Connector Adapter TNC M RP - TNC F
<b>118015044</b>	MTX-RF Connector Adapter FME M - TNC M
<b>118015045</b>	MTX-RF Connector Adapter SMA M - N M
<b>118015046</b>	MTX-RF Connector Adapter SMA F - N M
<b>118015047</b>	MTX-RF Connector Adapter SMA F - FME F
<b>118015048</b>	MTX-RF Connector Adapter SMA M - FME M
<b>118015049</b>	MTX-RF Connector Adapter SMA M R/A - SMA F
<b>118015050</b>	MTX-RF Connector Adapter SMA M - SMA F RP
<b>118015051</b>	MTX-RF Connector Adapter SMA M RP - SMA F

See below just to clarify connector types:



**MADRID**

Alejandro Sánchez, 109  
28019 Madrid  
Tel 902.19.81.46  
Fax 902.99.54.14

**BARCELONA**

@SantCugat Business Park  
AV. Via Augusta 15-25, Edificio B2  
08174 Sant Cugat del Vallés (Barcelona)  
Tel 902.19.81.46 / Fax 902.99.54.14

**DURANGO**

Pol. Aliendalde 11, Oficina 2G  
48200 Durango, Vizcaya  
Tel 902.19.81.46  
Fax 902.99.54.14

**VALENCIA**

Tel 902.19.81.46 Fax 902.99.54.14

**SEVILLE**

Calle Arquitectura, 1 – Torre 6  
41015 Seville  
Tel 902.19.81.46 Fax 902.99.54.14

**PORTUGAL**

Av. Coronel Eduardo Galhardo, 7, 1ºC  
1170-105 Lisbon  
Tel +351 218 162 625  
Fax +351 218 149 482

**Francia**

26 rue Gaudines  
78100 – St Germain en Laye  
Tel +33 1 39 04 29 40

**INDIA**

803-804, 8TH Floor, Vishwadeep  
Building, District Centre Janakpuri  
New Delhi 110 058  
Tel +91 11 4151 9011



[matrix.es](http://matrix.es) | [matrix@matrix.es](mailto:matrix@matrix.es)