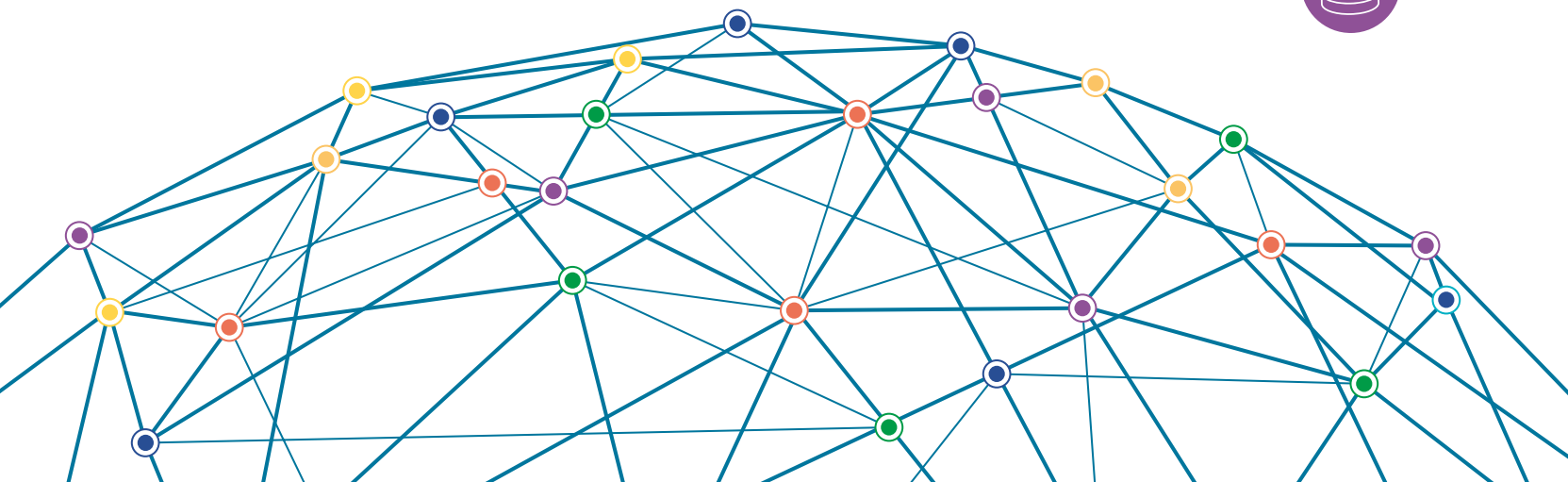


Matrix

flexitron group

SMART SOLUTIONS FOR A CHANGING WORLD

VERTICALS BROCHURE





WELCOME TO MATRIX

Matrix Electrónica is one of the domestic leaders in high-tech products aimed at the industrial and systems integrating markets. Boasting 25 years of experience, our company's new distribution concept enjoys wide acceptance in the Spanish and European markets and a growing presence in the South American market.

■ We stand out for our **friendly and trust-based service**, aligned 100% with the needs of each client.

As part of the Flexitrón Group, we generate efficiency with the supply of electronic components, modules and equipment, backed by the technical support of our team of engineers.

BIENVENIDOS A MATRIX

Matrix Electrónica es una de las referencias nacionales en productos de alta tecnología dirigidos a los mercados industriales e integradores de sistemas. Con 25 años de trayectoria, nuestra empresa desarrolla un nuevo concepto de distribución con una excelente aceptación en el mercado español, europeo y con presencia al alza en Sudamérica.

■ Nos diferenciamos por un trato cercano y de confianza, 100% alineados con las necesidades de cada cliente.

Formando parte del Grupo Flexitrón, generamos eficiencia con el suministro de componentes, módulos y equipos electrónicos, apoyados por el soporte técnico de nuestro equipo de ingenieros especializados.



WE ARE YOUR **TRUSTED PARTNER**: TOP BRANDS, COMPREHENSIVE ADVICE AND ENDLESS ADDED VALUES

SOMOS SU **PARTNER DE CONFIANZA**: PRIMERAS MARCAS, ASESORAMIENTO INTEGRAL Y UN SINFÍN DE VALORES AÑADIDOS



OUR TEAM. HERE TO LISTEN

At Matrix you can always count on a customer service and technical support team willing to help you in any way you may require. You will enjoy a high level of service to meet and even exceed your expectations.

EQUIPO HUMANO. LE ESCUCHAMOS

En Matrix podrá contar siempre con un equipo de atención al cliente y soporte técnico dispuesto a ayudarle en todo lo que necesite. Disfrutará de un alto nivel de servicio para satisfacer, e incluso superar sus expectativas.



Customer service

- A team committed to providing the best service possible and answer all your questions and concerns about the orders issued or the use of our online services.

Sales support

- We provide you with a network of internal and external sales representatives covering the entire country and a team dedicated to large corporate customers. We focus on managing tailored sales proposals for public and private companies, while providing custom advice to optimise the purchasing process through dedicated solutions.

Technical support

- A team of product specialists provides dedicated support to our business clients via email or online chat to help them in selecting the right product for their specific needs and find alternative products if necessary.

Atención al cliente

- Un equipo comprometido con brindarle el mejor servicio posible y responder a todas sus preguntas y dudas sobre la emisión de un pedido o el uso de nuestros servicios online.

Att comercial

- Una red de ventas internas y externas que cubre todo el territorio nacional y un equipo dedicado a los grandes clientes corporativos. Nos enfocamos en la gestión de propuestas comerciales a medida para empresas públicas y privadas, al tiempo que realizamos asesoramiento personalizado para optimizar el proceso de compra a través de soluciones dedicadas.

Soporte técnico

- Un equipo de especialistas en producto que presta su servicio exclusivamente para empresas y sólo a través del correo electrónico o chat online, para ayudarle con la selección del producto adecuado para sus necesidades específicas y la búsqueda de productos alternativos.

INDEX ÍNDICE

Our business model has been around for over 25 years and is designed to save you time and money, thanks to our wide range of products and services. This catalogue is just a sample of what you can find at www.matrix.es

Nuestro modelo de negocio existe desde hace más de 25 años y está diseñado para hacerle ahorrar tiempo y dinero, gracias a nuestra amplia oferta de productos y soluciones. Este catálogo es sólo una muestra de todo lo que podrá encontrar en www.matrix.es

- p. 5** TRAFFIC
TRÁFICO
- p. 6-7** TRANSPORTATION
TRANSPORTE
- p. 8-9** INDUSTRIAL AUTOMATION
AUTOMATIZACIÓN INDUSTRIAL
- p. 10-11** GAMING & VENDING
GAMING & VENDING
- p. 12-13** BUILDING AUTOMATION
DOMÓTICA
- p. 14-15** ENERGY
ENERGÍA
- p. 17** METERING
METERING
- p. 18-19** MEDICAL & FITNESS
MEDICAL & FITNESS
- p. 20** SECURITY
SEGURIDAD
- p. 21** UNIFIED COMMUNICATIONS
COMUNICACIONES UNIFICADAS
- p. 23** LED LIGHTING
ILUMINACIÓN LED



AXIOMTEK'S IOT PRODUCTS

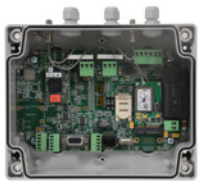
Visit www.axiomtek.com to see our innovative solutions for your company. We produce state-of-the-art solutions and offer full-service support in achieving your goals.

Energy
for life

- Power Supplies
- Chargers
- Battery Packs
- LED Drivers



LINUX COMMUNICATION GATEWAY



MTXM2M MTX-GATEWAY

- › 3G and 4G-LTE versions
- › 3 ports RS232-RS485, CAN, Ethernet
- › AC-DC, relays. VGA option
- › Wifi and 3G or 4G cellular modem
- › GPS & Radio cards option

GPS/GLONASS SMART RECEIVER



TRIMBLE ACUTIME

- › Antenna and receiver RS422 interface
- › Timing pulse synchronized one sigma
- › Stratum 1 time, network synchronization
- › Waterproof and corrosion resistant

JAVA PROGRAMMABLE 2G/3G MODEM



MTXM2M MTX-IOT

- › 4/5 bands Java Flexible Modem
- › GPS/GLONASS option
- › RS232 & RS485 ports
- › Battery inside
- › Ultra Low Power
- › RF option

ENCLOSED POWER SUPPLY



ESP-200

- › Universal AC input/full range
- › High reliability
- › Compact
- › High efficiency; pfc function
- › Overload & short circuit protection

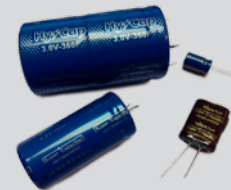
THERMAL PRINTER



FTP-639

- › Print speed 200 mm/sec
- › Thermal head : 100km, 100million lines
- › Cutter: 1 million cuts
- › Interface USB, RS232C
- › Paper hold arm angle can be modified

SUPERCAPACITOR



VEC3R0367QG

- › Over 10 times power than batteries
- › Reliably in wider temperature -40 to 65°C
- › Live over 500,000 cycles.
- › Tip. Application: Energy Storage solarcells / backup/ Last gasp

WIFI & COMBO WIFI+BLUETOOTH MODULES



LM821 y LM811

- › WiFi 802.11b/g/n y WiFi+Bluetooth 4.0
- › SW access point
- › Drivers for Linux and Android
- › WiFi/Bth coexistence

DEVICE SERVER



IOLAN STS16

- › 16 x RS232 Ports on RJ45
- › 10/100/1000 Ethernet
- › AC power or 48v DC power models
- › Virtual COM
- › Multiple OS
- › Lifetime warranty

INDUSTRIAL SWITCH



EX89000 SERIES

- › Hardened Managed Switch
- › Modular design
- › 24 FE + 4 GE Ports
- › SFP option
- › EN50121-4 Certified
- › Operating temperatura -40°C to 75°

LTE ROUTER



MTX-ROUTER HELIOS II

- › LTE Quad Band module
- › 4 x FE Ports
- › 1 RS232 or RS485 Port
- › Wifi b/g/n (AP mode)
- › VPN supported
- › Operating temperature -20°C to 70°C

INDUSTRIAL PICO-ITX BOARD



CONGA-PA3

- › 3rd generation Intel ATOM /Celeron
- › Low Power 5 to 10W TDP
- › Extended T^a range available
- › RAM and Flash onboard

ARM DUAL CORTEX™-A7 EMBEDDED MODULE



TQMLS102X

- › Layerscape LS102xA
- › 3xGb Eth, 2xPCIe, 1xUSB 3.0
- › IEEE 1588 support
- › Extended T^a range



DEAD RECKONING + GPS



**TRIMBLE
AADVARK**

- › GPS DR receiver
- › Gyroscope included in module
- › 19*19 mm -160dBm
- › GPS, aGPS, SBAS, PPS
- › NMEA and HIPPO protocols up 10Hz

HIGH PRECISION GPS RECEIVER



TRIMBLE BD930

- › High accuracy 0.008m
- › RTK L1, L2, L5
- › GPS, GLONASS, GALILEO, BEIDU
- › USB, LAN, 4 RS232 ports
- › NTRIP, NTP, 20Hz
- › UHF modem integration

GPS ANTENNA FOR RUGGED ENVIRONMENTS



TRIMBLE BULLET III

- › Weatherproof housing
- › Filtering for harsh RF jamming environments
- › Proven extra rugged, reliable
- › Available in 3.3v (TNC) or 5v (TNC or F)
- › GLONASS and high gain opt



We **simplify** the use of **embedded technology**.

Product Portfolio:



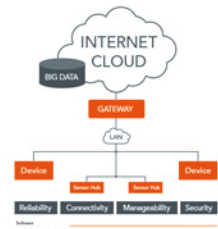
Computer-on-Modules



Single Board Computer



EDMS



Internet of Things

Find out more at: www.congatec.com



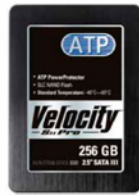
ACTIVE RFID



SCIEL READER

- › Tags and sensors available
- › Tracking and monitoring applications
- › Integrated via multiple protocols
- › High range up to 80m adjustable.
- › 433MHz Active RFID

MEMORY MODULE SSD



2.5" SSD IN SLC - VELOCITY SII PRO

- › Heavy program/erase application
- › Enhanced endurance
- › High Performance with SATA interface
- › Data protection technology during power failure
- › MIL-STD-810G compliant

BLUETOOTH AUDIO MODULE



LM745

- › Embedded DSP and audio codec
- › HFP/HSP/A2DP/AVRCP profiles supported.
- › APTX Support
- › AT command configurable
- › -20°C to 70°C

IN-VEHICLE BOX PC



TBOX810-838-FL

- › Intel® Atom™ Bay Trail-I
- › -40°C ~ +70°C
- › DDR3 4 GB system memory onboard
- › eMark, ISO7637, EN50155, EN50121 and IEC60945
- › M12 Connectors

RAILWAY FANLESS TOUCH PANEL PC



GOT710-837

- › Sunlight readable 10.4"
- › Intel® Atom™ processor E3845 1.91 GHz
- › Wide operating temperature: -25°C ~ +70°C
- › DDR3 4 GB system memory onboard
- › EN50155 certified
- › M12 Connectors

RAILWAY INDUSTRIAL SWITCH



AQUAM8512A

- › Layer 3 Managed
- › 8FE+4G/9FE+3G Port
- › Wide operating temperature: -40°C ~ +75°C
- › 802.3af/802.3at POE+
- › EN50155 certified
- › M12 Connectors

IN-VEHICLE USE MONITOR



TREK-303DH

- › Vehicle-grade 7" (16:10)
- › Resistive Touch Screen
- › Wide operating temperature: -30°C ~ +70°C
- › 2 x 2-watt speakers
- › EN50155 and EN50121 certified
- › M12 Connectors

IN-VEHICLE USE TERMINAL



TREK-773

- › Intel® Atom™ E3826 SOC
- › 7" WVGA wide-angle
- › Wide operating temperature: -30°C ~ +60°C
- › CAN, Wifi, Bluetooth, NFC and LTE
- › Configurable keys
- › Shock and vibration tolerance

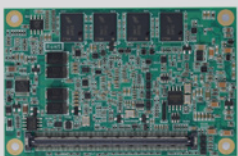
IN-VEHICLE BOX PC



ARK-2151V

- › Intel® Celeron 2980U / Core i5-4300U
- › Operating temperature: -30°C ~ +70°C
- › 4 x POE Ports
- › 9 ~ 36 VDC
- › Shock and vibration tolerance
- › UL, CCC, BSMI, E-Mark (E13)

COM EXPRESS TYPE 10 MODULE



CEM840

- › Intel ATOM E3800
- › 2xSATA, 8xUSB 2.0 and 1xUSB 3.0
- › Up to 4GB DDR3L onboard RAM
- › Extended Temperature range optional

ARM CORTEX-A9 MODULE



TQMa6X

- › i.MX6 processor from Freescale
- › Power consumption Typ<4W
- › High Graphics performance
- › IEEE 1588 support and security functions

COM EXPRESS® MINI MODULE (TYPE 10)



SOM-7567

- › Intel® Atom™/ Celeron® Processor
- › COM R2.1 Type 10 Mini Module
- › Onboard DDR3L and SSD



DIN POWER SUPPLY



DN-100-24

- › Universal AC input
- › Output 24Vcc
- › DIN rail TS35 / 7.5 or 15
- › Protec: SCP, OLP, OVP.
- › High oper Temp to 70°C
- › UL508 (Ind. ctrl equipment)
- › UL1310 Class 2 power unit

OPTICAL SENSORS



OPB300

- › Based on Infrared light
- › Analog, digital outputs
- › Non-contact sensing
- › Motion or position sensing
- › Custom and standard solutions
- › Distanc. range 1 to 762mm

JAVA PROGRAMMABLE 2G/3G MODEM



MTXM2M MTX-IND

- › Industrial Featured M2M Modem
- › Optocoupled input/outputs
- › RS232-RS422-RS485 ports
- › AC-DC and internal battery
- › IP65 housing
- › RF option (BT,GPS,Zigbee,Wavenis)
- › Internal or external antennas

RUGGED TABLET COMPUTER



TRIMBLE YUMA II

- › 7 inch capacitive, sunlight readable
- › Win 7 Embedded
- › Intel Atom 1.6Ghz, 4GB RAM + 128M FLASH
- › GPS 2-4 m accuracy
- › 3.75G Data modem
- › Bluetooth and Wi-Fi
- › IP65 and MIL-STD-810G

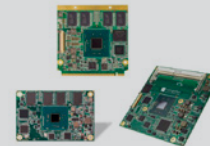
FANLESS BOX PC



rBOX800

- › Intel® Atom™ E3827
- › -40°C ~ 70°C
- › 4 Expansion Slots
- › Relay Output, Isolatec COM
- › Digital and Analogue IOs

MÓDULOS COM EXPRESS Y QSEVEN



CONGA TCA3/MA3/QA3

- › COM Express (tipo 6 y 10) y Qseven
- › Intel ATOM E3800 y Celeron
- › Soportan TODOS los SoC de la familia E3800
- › Rango de temp. industrial (-40°C a +85°C) opcional
- › Bajo consumo (<10W) y bajo coste

MÓDULO ARM DUAL CORTEX™-A7



TQMLS102X

- › Procesador Layerscape LS102xA de Freescale
- › 3xGb Eth, 2xPCIe, 1xUSB 3.0
- › IEEE 1588 support
- › Extended T° range

PANEL PC



P1157E-871

- › 15" XGA TFT LCD touch display
- › Intel® Core™ i7/ i5/ i3
- › 2 x PCIe x8 or 2 x PCI slots
- › Built-in speakers and Wifi
- › IP65 Front Bezel design
- › Windows and Linux

HARDENED MANAGED SWITCH



EX78900

- › 12 x 10/100/1000 BASE-TX (8 x PoE port)
- › 4 Gigabit SFP ports
- › -40°C to 75°C
- › Redundant power inputs: 52 - 57VDC
- › Aluminum Case

WIFI DEVICE SERVER



IOLAN SDS W

- › IEEE 802.11 a,b,g,n
- › Gigabit Ethernet
- › Dual Band (2.4GHz/5GHz)
- › Up to 4COM
- › -40°C to 75°C
- › 9 - 30VDC

PROFIBUS DP-V0 TERMINAL



PROFI-5017

- › 3000VDC isolation protection
- › Rs-232 Port
- › 8 Channel Analog IO
- › -25°C to 75°C

1, 2, 4, 8 OR 16 PORTS SERIAL CARD



UltraPort PCI

- › 1, 2, 4, 8 or 16 port serial card
- › Universal PCI / PCI-X
- › RS232, RS422, RS485
- › DB9, DB25, RJ45 connectors
- › Solaris, SCO Unix, Windows, Linux OS Drivers



FANLESS DIN-RAIL PC



RBOX510-6COM

- › ATEX & CID2 anti-explosive certification
- › Intel® Atom™ processor E3827
- › Isolated RS-232/422/485 ports
- › 2 isolated 10/100/1000Mbps Ethernet
- › DIN Rail mounting kit

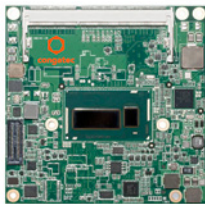
THIN MINI-ITX INDUSTRIAL BOARD



CONGA IA4

- › Next generation Intel Celeron and Pentium processor
- › Very thin profile for compact designs
- › Burst Technology
- › Long life components for 24/7 embedded use

COM EXPRESS TYPE 6



CONGA TC97 / CEM881

- › Intel iCore de 5ª generación
- › Máximo rendimiento en tamaño compacto
- › consumo 15W TDP
- › Rango T° industrial opcional

Scan this QR and get extra info about this products

Amplie información sobre estos productos escaneando el siguiente código QR



Looking for a reliable and tiny computer?

ARM + Linux is what you need.



- ATMEL ARM9 CPU
- Linux computing platform with file system
- 128MB DDR2 SDRAM and 256MB NAND Flash
- 2 x 10/100Mbps Ethernet ports
- 2 x high-speed USB hosts, up to 480Mbps
- 4 x RS-232 / 422 / 485 serial ports

- ☑ **Compact Size**
- ☑ **Cost-effective**
- ☑ **Low Power Consumption**



» learn more: www.artila.com

Artila

Artila Electronics Co., Ltd.

Tel: +886-2-8667-2340

Email: sales@artila.com



ENCLOSED POWER SUPPLY



EPR-75

- › Universal AC input/full range
- › Overload/Short circuit
- › Compact, High efficiency, High reliability
- › 100% full load burn-in test

MEMORY MODULE – SATA



AF8GSSHI-VACXP

- › Interface SATA III 6 Gb/s
- › Industrial Grade Embedded
- › Advanced Wear Leveling, AutoRefresh and PowerProtect. technology
- › Ultra high performance solution
- › Operation Temperature -45°C to +85°C
- › MTBF @ 25°C >5,000,000 hours

RFID MODULES



TWN4

- › SmartCard Reader/Writer
- › Contactless RFID interface & Integrated contact card reader/writer
- › Supported the ISO/IEC7816
- › Integrated chip card reader.
- › Worldwide Certifications: CE (Europe), FCC (USA)

LINUX CORE COMPACT GATEWAY



MTXM2M MTX-GTW

- › M2M and IoT gateway
- › ARM processor
- › Wifi and 3G or 4G cellular modem
- › 3 serial ports, CAN, Ethernet
- › GPS option

DUAL SIGFOX/LORA MODULE



MM002-XX-EU

- › Dual protocol support Sigfox and LoRawan
- › Very long range and low power consumption

MULTIPROTOCOL PLC CHIP



SM2400

- › Supporting PRIME, G-3, IEEE 1901.2, proprietary
- › Robust communication up to 500kbps
- › Configurable operation channel from 5-500Khz

MINI ITX BOARD



GMB130

- › AMD Embedded R-Series SOC
- › 4K resolutions
- › Support 3 simultaneous display
- › 6W stereo audio amplifier
- › Windows® 7/8.1/10 & Linux kernel 3.0 above

OPEN FRAME PANEL PC



FDK172-834

- › 17" SXGA TFT LCD display
- › Intel® Celeron® processor J1900
- › Touchscreen optional
- › Dual PCIe Mini card slots

MINI ITX BOARD



AIMB-231

- › Intel® Core™ i5-5350U/ i3-5010U
- › Low profile
- › 204-pin SO-DIMM up to 16 GB
- › Realtek ALC892 supports 7.1
- › Tri display for eDP/LVDS, DP/HDMI, and DP++

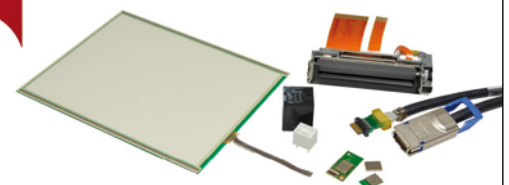
Scan this QR and get extra info about this products

Amplíe información sobre estos productos escaneando el siguiente código QR



FUJITSU

Quality Relays, Touch Panels, Thermal Printers, Wireless Modules and Connectors



emea.fujitsu.com/components

shaping tomorrow with you



PICO ITX ARM SBC



RSB-3410

- › Freescale ARM Cortex-A9 i.MX6
- › 2.5" Size
- › full HD 1080p HDMI 1920x1080
- › Single Channel 18/24 bit LVDS
- › Dual mini-PCIe for WIFI/3G support
- › Multiple OS support in Linux/Android

MINI ITX BOARD



D3313-S5

- › Mini ITX form factor
- › GX-412HC 1.2 – 1.6 GHz Quad Core
- › Radeon™ HD 8210E 300MHz
- › 2 x SO DIMM Socket (1.5V / 1.35V), max. 16GB
- › Realtek ALC 671, 5.1-channel
- › DC-IN 12V

3,5" FORM FACTOR ARM SBC



SBC2100

- › Freescale iMX 6Q/6D Quad or Dual-Core
- › 1GB/2GB DDR3 RAM
- › supports I²C, GPIO, CAN Bus
- › 9V ~ 36V wide range
- › Mini PCIe slot with SIM socket
- › Android 4.2 / Ubuntu 12.04

THIN MINI-ITX BOARD



CONGA-IC97

- › 5th generation Intel iCore
- › Highest performance
- › Improved Graphics Performance up to GT3 HD6000
- › Wide Range Power Input 12-24 Volt
- › congatec embedded Board Controller Features

COM EXPRESS MODULE



Conga-TCG

- › 2nd generation AMD G-series
- › Single chip quad core up to 2GHz
- › Outstanding graphical performance
- › Power efficient
- › Low cost

ARM CORTEX-A9 MODULE



TQMA6X

- › with i.MX6 processor from Freescale
- › Compact module with low power consumption
- › 3D and HD graphics support
- › Ideal for last generation vending machines



ADVANTECH

Enabling an Intelligent Planet

www.advantech.eu





3.5" FORM FACTOR SBC



CAPA843

- › Intel® Celeron® J1900
- › 2 x DDR3L SO-DIMM up to 8GB
- › 4 x USB 3.0 Ports
- › 2 x MiniPCIe slots
- › Operating temp. -20°C ~ +70°C

EMBEDDED PC



UBC-221

- › Intel Quark x1000 Single core 400MHz
- › On-board DDR3 800MHz 512MB & 4GB eMMC NAND flash
- › Support 4 GPIO and 1 UART
- › Support 2x 10/100 Ethernet and 1x MiniPCIe sockets
- › Yocto Linux

INTELLIGENT 7" TFT DISPLAY



EA EDIPTFT70-ATC

- › Capacitive or Resistive touch
- › 800x480 DOTS, 16-BIT COLOR
- › 8MB ON BOARD FLASH
- › RS-232, I²C-BUS OR SPI-BUS
- › Easy programming

ENGINEERED FOR LIFE

We have a passion for ingenuity and a 130 year legacy of pioneering systems and technologies to distribute, measure, monitor and manage water accurately and efficiently.

www.elstermetering.com

PANEL PC



GOT5153W-834

- › 15.6" WXGA wide screen TFT
- › Capacitive or Resistive touch
- › Intel® Celeron® Processor J1900
- › IP65 front bezel
- › Fanless design
- › Windows and Linux OS

POWER OVER HDBASET (POH)



SILVERTEL AG5600

- › 88W PD module
- › Small size PoE PD half brick
- › Compatible IEE802.3af-at

GPRS JAVA MODULE



GEMALTO CINTERION BGS5

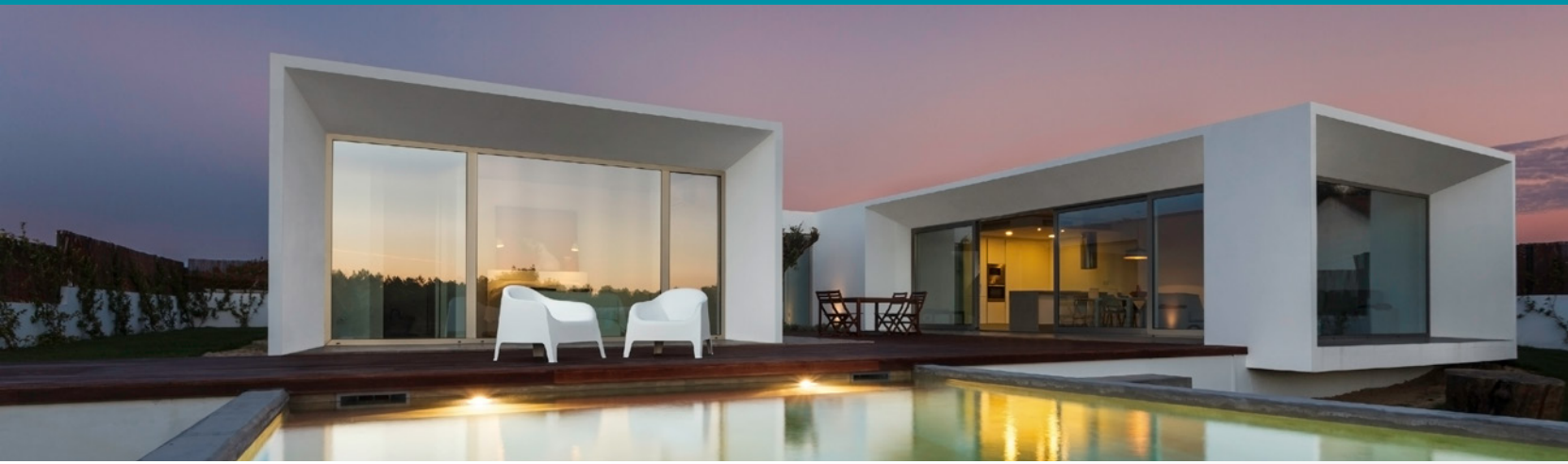
- › PoE extractor
- › 12Watts 3.3-5 and 12V output
- › Industrial temp with Class
- › Small package compatible with PoE+
- › Compatible IEE802.3af

ISOLATED POWER OVER ETHERNET (POE)



SILVERTEL AG9700

- › Industrial M2M IoT module
- › GSM-GPRS class 12, 4 bands
- › Java programmable
- › Embedded TCP/IP Stack
- › USB, GPIO, 2 UARTS



ANTENNAS



- › Wide range of frequencies
- › 2G/3G-UMTS/4G-LTE/Wi-Fi/GPS
- › Mounting options Screwed/Magnetic/Stub/Yagi..

ANTENNA

SENSORS



- › Temperature/HR sensors
- › Communication via RS232 and RS485
- › Range of measurement -55 to 125°C
- › Mounting indoor and outdoor

T^a & HR SENSORS

LONG RANGE RF MODULES AND SENSORS



- › Up to 1Km range LOS
- › Very low power consumption
- › Mesh Networking
- › very reliable communication

WAVENIS



TQ - Your fast track to Embedded Solutions

ARM solutions – innovative, leading



ARM Cortex™-A8
module TQMa335x with Sitara™ AM335x from Texas Instruments



ARM Cortex™-A9
module TQMa6x with MCIMX6 from Freescale



ARM Dual Cortex™-A7
module TQMaLS102x with Layerscape LS102x from Freescale

x86 solutions – flexible, scalable



Intel® Atom™ E3800
module TQMxE38M



Intel® Core™ 5000U
module TQMx50UC



Intel® based
hardware kits and devices

TQ-Group | www.tq-group.com

Technology in Quality





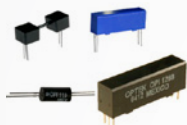
ANTENNAS



ANTENNA OMNI FIBERGLASS

- › External Mounting
- › Connector N M
- › Frequencies 800/900 1800/1900/2100MHz
- › Average Gain 7dBi
- › Polarization Vertical
- › Power 50W
- › Low lost RF cable N F to SMA M

OPTOISOLATOR



OPI1268

- › Isolation from 6kv to 50kv
- › Creepage dist. 32 to 100mm
- › Temperature range -50 to +100 °C
- › IP65 (Dust & Water Proof Level)
- › ATEX / IECx (Non-Ignition Source)

INVERTERS



SP-1000

- › Pure sine wave output
- › Input & output fully isolation
- › Controlled cooling fan
- › ProtecTIONS: Reverse Polarity Under Voltage / Over Voltage
- › Short Circuit / Overload-Temp.
- › E13 / UL / CE / FCC approved

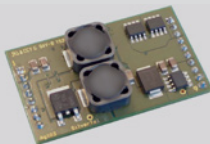
INTELLIGENT BATTERY CHARGER



SILVERTEL AG102

- › Maximize battery life
- › Reduce Power Consumption
- › 12V Sealed lead 1.2-7Ah capacity
- › UPS with few components

SOLAR PANEL BATTERY CHARGER



Silvertel Ag103

- › Low Power Consumption
- › Solar Panel power source up to 50W
- › Battery 12V 1.2-7Ah

2G-3G JAVA EMBEDDED DIN RAIL MODEM



MTXM2M MTX-DIN

- › Din Rail mounting
- › Terminal block
- › RS232-RS422-RS485 ports
- › Optocoupled Input&Outputs, Analog inputs
- › USB, Relays

3G HSPA - 4G LTE MODULE



GEMALTO CINTERION PHS8-PLS8

- › HSPA/LTE module
- › Voice, TCP-IP stack
- › Diversity Antenna
- › GPS/GLONASS receiver
- › USB Win&Linux support.
- › GPIO and UART

LONG RANGE RF MODULES AND I/O DEVICES



WAVENIS

- › Up to 1Km range LOS
- › Very low power consumption
- › Mesh Networking
- › very reliable communication

PLC MULTIPROTOCOL CHIP



SM2480

- › Supports PRIME, G3, IEEE 1901.2 and custom
- › Specifically targeted for: solar panel micro-inverters
- › smart LED controllers
- › other Grid-connected devices

Scan this QR and get extra info about this products

Amplíe información sobre estos productos escaneando el siguiente código QR





IC0300 & Intel Gateway Solution
A powerful Combination to IoT Success Compact, rugged, fanless and Wide-temperature



For more information please contact us at: sales@axiomtek.eu or visit www.axiomtek.com



ELECTRIC SUBSTATION IPC



IPC122-833-FL

- › Intel® Atom™ processor N2800 1.86 GHz
- › IEC 61850-3 and IEEE 1613 certified
- › Isolated COM, LAN, CANBus and DIO ports
- › 100~240VAC and 134 ~ 240VDC

FLEXIBLE MODULAR DESIGN SWITCH



SICOM3028GPT

- › Supports up to 28 gigabit fiber/copper ports
- › IEC 61850-3 and IEEE 1613 certified
- › Supports GPS module, IRIG-B module
- › PTP over E1/T1 module
- › HSR/PRP module

TIME SERVER



PTS-10/30

- › IEC61850, IEC60870, DNP and SNMP
- › BDS (Beidou Satellite System)
- › GPS, IRIG-B, TOD, PTP
- › Time adjustment step up to 200ns/s
- › Dual power supplies (3U)

TERMINAL SERVER



IOLAN SDS HV/LDC

- › 8, 16 and 32 serial ports on RJ45
- › Dual 10/100/1000 Ethernet
- › IEC 61850-3 and IEEE 1613
- › Low Voltage 24v DC /48v DC
- › Universal high voltage
- › Modbus Gateway

MEDIA CONVERTER



EL1141 Series

- › 10/100BASE-TX to 100BASE-FX
- › IEC61850-3/IEEE1613 Certification
- › -40°C to 75°C
- › Dual 10/100/1000 Ethernet
- › Link-Fault-Pass-Through (LFPT)
- › Long distance up to 40Km

INDUSTRIAL SWITCH



EX83000 SERIES

- › 16-port Manage Switch
- › IEC61850-3/IEEE1613 Certification
- › -40°C to 75°C
- › SFP Option
- › Ring topology protocols
- › Redundant power input

PROGRAMMABLE AUTOMATION CONTROLLER



PAC-4070

- › Linux 2.6.29 computing platform
- › ATMEL AT91SAM9G20, 400MHz
- › Analog input: 4x, 16-bit A/D, multiplexed
- › Digital input: 4 x 2500Vrms opto-isolated
- › Digital output: 4 x 500mA max. driving current
- › Ethernet: 2 x 10/100Mbps
- › Power input: 9~40VDC

MÓDULO EMBEBIDO ARM9



TQMA28

- › Very low power consumption (<1W)
- › strongly reliable and tested
- › Industrial temperature range
- › IC61850 stack support

MÓDULO ARM DUAL CORTEX™-A7



TQMLS102X

- › Layerscape LS102xA from Freescale
- › 3xGb Eth, 2xPCIe, 1xUSB 3.0
- › IEEE 1588 support
- › Extended T° range



M2M Modules and Terminals

Cinterion M2M Modules and Terminals cellular communications for virtually any IoT or M2M application.

Rugged design, unparalleled engineering and quality standards, reliable in the most extreme environments over the long life of your M2M solution.

Offered for all cellular technology standards including CDMA, GSM, GPRS, EDGE, UMTS, HSDPA, LTE and beyond, Cinterion modules and terminals provide voice, high speed data and IP-based wireless communications.





Wireless modems, routers, gateways & software solutions for M2M and IoT applications

- 4G 2G, 3G and 4G network
- RS232/RS485/USB
- Ethernet, CAN
- Input/Outputs
- GPS, Bluetooth, Wifi or ISM radio card
- Ultra Low Power
- Internal battery
- JAVA programmable
- Linux embedded
- Industrial grade
- Global & regional approvals

- Advance serial to 3G gateway
- Webserver & Telnet
- SMS/IP alarms
- GPIO telemetry, control
- DynDNS
- Cable replacer
- 2G/3G - I2C/SPI tunnel
- SMS to serial tunnel
- Metering GSM-GPRS
- Modbus, RF Mesh concentrator
- Bluetooth bridge
- Intelligent relays
- Time synchronization
- GPS management
- Routing, NAT

ADVANCED M2M-IOT INNOVATIVE PRODUCTS SOLUTIONS FOR YOUR M2M-IOT DAILY APPLICA...

WWW.MTXM2M.COM

Choose EtherWAN—When Connectivity is Crucial...

EtherWAN Systems Inc. is a leading manufacturer of Hardened Ethernet, PoE, and Fiber connectivity products specifically designed for harsh and demanding environments. Founded in 1996 in Irvine CA, EtherWAN specializes in the designing and manufacturing of Ethernet Switches, Media Converters, Ethernet Extenders and Power over Ethernet products for applications where connectivity is crucial. With our core focus on Ethernet connectivity for extreme environments with stringent requirements product reliability and quality are top priority. EtherWAN's product development, engineering, manufacturing and quality assurance processes are structured to push the limits of stated specifications resulting in products that continually exceed expectations. Our goal is to provide quality reliable products for extreme applications, markets, and environments.

EtherWAN Systems, Inc. US headquarters is located in Anaheim, CA, USA with Pacific Rim headquarters and manufacturing in Taipei, Taiwan. With sales, marketing and engineering expertise on both sides of the Pacific Ocean and its own production lines in Taiwan, EtherWAN combines the highest quality products with professional support using the most advanced Ethernet technology resulting in systems that just work.



—Featured Products—

- *Hardened, Industrial, and Commercial*
- *SC, ST, and SFP options available*
- *Managed, web-smart or unmanaged*



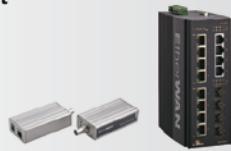
Ethernet Switches

- *Ethernet extension over Coax or Copper pair*
- *Power over Link™*



Ethernet Extenders

- *60W High-power PoE Switches*
- *IEEE802.3 at/af compliant*
- *PoE Media Converters*
- *PoE Ethernet Extenders*



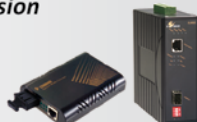
PoE Solutions

- *Protect your valuable network equipment*
- *Pass-through data via RJ45*
- *Pass-through data via RJ11*
- *Compatible with Gigabit and PoE products*



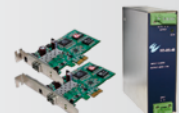
Surge Protectors

- *Gigabit or Fast Ethernet*
- *Copper-to-Fiber media conversion*
- *Fiber-to-Fiber media conversion*



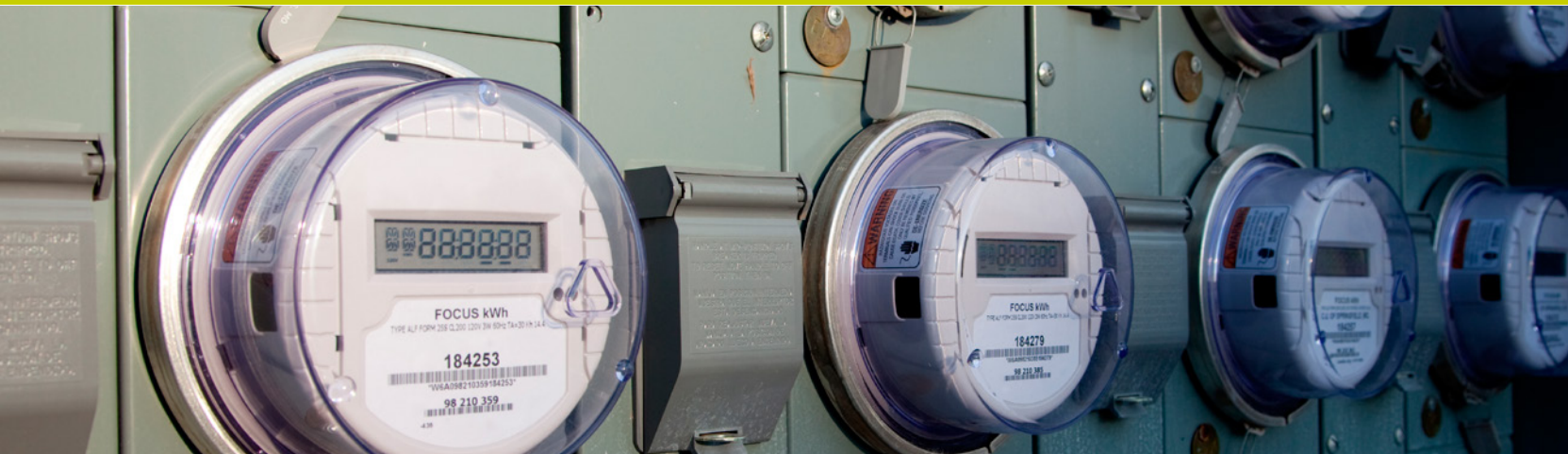
Media Converters

- *Network Interface Cards*
- *Industrial power supplies and adaptors*
- *SFP fiber transceivers*
- *Mounting kits*



Accessories

www.EtherWAN.com



CHARACTER OR GRAPHIC DISPLAYS



DOGM DISPLAY

- › Extremely compact from 2.0 mm width
- › SPI, I²C or 4-bit, 8-bit
- › 3.3V or 5V
- › -20 - +70°C

LORA & SIGFOX DEVICES



- › Very long range
- › Embedded modules with dual protocol stack (Sigfox/LoRawan)
- › configurable with AT commands
- › Pulse to Wireless M-bus converters, sensors, etc.

WIRELESS M-BUS DEVICES



- › Embedded modules in 169Mhz and 868Mhz
- › configurable with AT commands
- › Pulse to Wireless M-bus converters
- › Repeaters supported

RS-485 BUS REPEATER



TM-7510U CR

- › Automatic or manual baud rate
- › 2-way 2500 VDC Isolation Protection
- › Compact design
- › Din rail or wallmount
- › -25 °C to +75 °C

JAVA COMPACT 2G MODEM



MTXM2M MTX-651-RS485

- › Java programmable
- › 4 bands GSM GPRS class 12
- › 1 RS232 + 1 RS485, GPIO
- › Serial-2G Tunnel, Modbus TCP
- › Metering features -CSD-

ANTENNAS



ANTENNA ESFERA

- › Frequencies 800/900/1800/1900/2100MHz
- › Average Gain 2dBi
- › External Mounting IP64
- › Connectors SMA/FME/MMCX and others
- › Cable RG174U

CONNECTORS



- › Complete range of connector
- › High quality products
- › Mini PCIe Socket
- › SIM Card
- › RJ45 Connectors
- › D_Sub Connectors
- › USB Connectors

elster

Our WaveTalk solution is a bi-directional battery-operated radio repeater, operating at 868 MHz, with a 25 and/or 500 mW transceiver, conforming to IP68 with low energy consumption.

Our WaveLog solution is a bi-directional battery-operated data logger, operating at 868 Hz, conforming to IP 68 with up to 4 pulse inputs / 4 pulse outputs, low energy consumption operation and a service life of more than 10 years.

WaveCard:
The ready-to-use Wavecard OEM board provides you with an easy plug-in solution for bringing Wavenis-based M2M and WSN products to market in record time. Wavecard boards are available with either 25 mW or 500 mW power output, depending on your range requirements (up to 4 km with a 500 mW board).

Wavecard OEM boards enable manufacturers and integrators to develop state-of-the-art wireless products that meet the connectivity and autonomy requirements of a wide variety of M2M and telemetry products in which low power consumption and long wireless range are key factors.

www.elstermetering.com



ELECTRIC POTENTIAL INTEGRATED CIRCUITS



PS25102

- › EPIC Ultra High Impedance ECG Sensor
- › Noncontact electrometer
- › Ultra high input resistance (2×10^{10} Ohm)
- › Dry-contact capacitive coupling
- › Input capacitance as low as 15pF
- › Lifestyle sports and health products

THERMAL PRINTERS-MOBILE



MPU-L465

- › Print speed 85 mm/sec
- › Resolution 300 dpi
- › Paper width variable 70 - 115mm
- › Delivers crisp/ bar code labels, others.
- › Comm: USB, RS-232C & Bluetooth

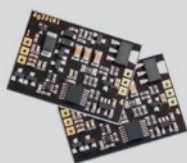
ENCAPSULATED POWER SUPPLY



MSC-245

- › Medical power supply
- › PCB Mounting
- › Fully Encapsulated Plastic Case
- › Input Range 90-264VAC, 47-63 Hz
- › Regulated Output and Low Ripple and Noise
- › Isolation Class II
- › CE, CB, UL, CUL, Approvals

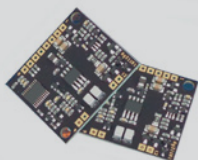
WIRELESS POWER RECEIVER



SILVERTEL AG301

- › Qi compliance
- › No electricals contacts.
- › Up to 5 Watts Output Power
- › Overload and short circuit protection

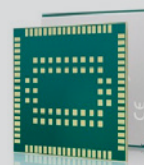
WIRELESS POWER TRANSMITTER



Silvertel Ag311

- › Qi compliance
- › No electricals contacts.
- › Low standby power consumption
- › Overload and short circuit protection

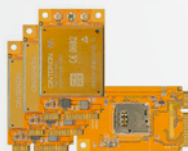
COMBI HSPA+GPS/GLONASS MODULE



GEMALTO CINTERION EHS8

- › JAVA programmable
- › 3G 5 bands, GSM 4 bands
- › Embedded TCP/IP Stack
- › USB, GPIO, 2 UART
- › Low power
- › Battery operation

MINIPICIE 3G-4G BOARDS



MTXM2M MINIPICIE

- › 3G-HSPA/HSPA+
- › 4G-LTE multibands
- › Gemalto Cinterion EHS5/6, PHS8, PLS8 based
- › Digital Voice. GPS option
- › MicroSIM card holder

WIFI AND WIFI+BLUETOOTH MODULES



LM821 & LM811

- › USB interface with host
- › Drivers for Linux and windows
- › Support for client, AP and Monitor modes
- › Bluetooth 4.1 in LM811 combo

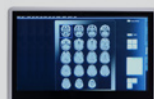
BLUETOOTH 4.1 MODULES



LM931 & LM951

- › Very low power consumption
- › Programmable
- › LM931 BLE embedded stack
- › LM951 Bluetooth 4.1 dual module with embedded stack
- › RS232 interface

MEDICAL GRADE PANEL PC



MPC240

- › 24" FHD TFT LCD
- › 4th Generation Intel® Core™
- › 2 x 204-pin DDR3L-1600 up to 16 GB
- › Front Camera
- › Windows® 7, Windows® 8.1
- › EN60601-1 and CE certified

MEDICAL GRADE TABLET PC



MICA-071-A11-A1E

- › Pocket-size solution fits in your hand
- › 7" HD LCD with P-cap Multi-Touch
- › Intel® Atom™ Bay Trail-T processor
- › Windows 8.1 Industry Pro
- › IP54 enclosure
- › Barcode and cameras

MEDICAL GRADE TOUCH LCD MONITOR



MMT225

- › 22" TFT 300 nits WSXGA+ LCD
- › IP67 Front bezel
- › 2W Stereo Speakers
- › Bluetooth and camera optional



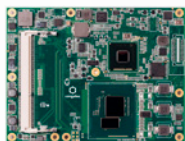
EMBEDDED SBC



RSB-3850

- › Intel Quark x1000 Single core 400MHz
- › On-board DDR3 800MHz 512MB
- › Support 4 GPIO and 1 UART
- › Support 2x 10/100 Ethernets and 1x MiniPCle sockets
- › Yocto Linux

COM EXPRESS TYPE 6MODULE



CONGA-TS97

- › 5th generation Intel iCore processors
- › Highest performance, and great graphics
- › Performance for high-end medical devices

ARM CORTEX-A8 EMBEDDED MODULE



TQMA335X

- › Graphic acceleration available
- › Small form factor
- › Competitive price
- › Ideal for latest generation professional fitness machines

PROJECTED CAPACITIVE TOUCH PANELS



PCT PANEL

- › 7 – 21" PCT Touch Panels
- › Up to 10 fingers
- › Transparent, black or white bezel
- › USB, I2C and RS232 interface
- › TFT integrated
- › Customized bezel and glass

E-PAPER



EPA20-A

- › 2.4V – 3.3V
- › 172X72 DOTS
- › SPI Interface
- › 4 Grey levels

Q7 MODULE



Conga-QG

- › AMD 2nd generation G-series
- › Compact size 7x7
- › Great graphics performance
- › Low power consumption
- › Ideal for portable medical devices



TT Electronics
Make Possible

Expert electronics you can rely on to get ahead



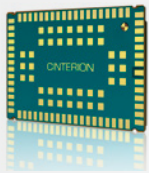
We have years of experience and expertise in engineering and delivering optoelectronic sensors for applications in the harshest environments across industrial, transportation, aerospace, defence and medical markets.

Find out more at www.ttelectronics.com





GSM-GPRS 2-4 BANDS MODULE



**GEMALTO
CINTERION BGS2**

- › Industrial featured 2G module
- › Full Voice support, TCP-IP stack
- › Highly compact size
- › Can store voice prompts
- › RLS jamming detect

LINE INTERFACE CIRCUIT



SILVERTEL AG1171

- › SLIC-FXS, FXO compatible
- › Single 3.3 to 5V supply required
- › 2/4 wires conversion
- › Tip-Ring polarity reversal
- › On board Ring generator

RFID READERS & WRITERS



MERCURY 6

- › Indoor and outdoor applications.
- › Small form factor
- › Operates at +5 to +31.5 dBm
- › Long read range (30 ft)
- › RFID tag read rate: 750 tags/second
- › Wi-Fi network connectivity
- › AEPC global Low Level Reader Protocol (LLRP) v1.0.1

REDUNDAN POWER SUPPLY FOR RAID



RAM-2805P

- › Hot swap power module operation
- › Zero transfer time when backup-
- › Power fail and fan fail alarm
- › Support dual motherboard system.
- › Use DIN41612 industrial connector
- › Meet Intel ATX 2.01/2.03/ ATX 12V

BLUETOOTH 4.1 MODULES



LM931 & LM951

- › Very low power consumption
- › Programmable
- › LM931 BLE embedded stack
- › LM951 Bluetooth 4.1 dual module with embedded stack
- › RS232 interface

ARM9 EMBEDDED MODULE



TQMA28

- › Smallest module in the market
- › Very low power consumption (<1W)
- › strongly reliable and tested
- › Industrial temperature range

ETHERNET AND POWER EXTENDER



ED3238

- › 10/100 Mbps Ethernet
- › IEEE802.3af PoE over Coaxial
- › Power over Link
- › Up to 180m
- › Data rate up to 100Mbps

FANLESS BOX PC



EBOX671-885-FL

- › 4th Generation Intel® Core™ i7/i5/i3
- › 4 x 10/100/1000Mbps PoE
- › Triple independent display
- › 8 x USB
- › 2 x 2.5" SATA HDD, CFast™ and mSATA

MEDIA CONVERTERS



**S-10G MEDIA
CONVERTERS**

- › Pluggable 10G Fiber Transceiver slots
- › 9 - 30 vDC
- › Dual SFP, Dual XFP or XFP to SFP
- › Fiber to fiber, copper to fiber and copper to copper conversion



Conversores de Medios y Extensores Ethernet

- ⦿ Amplíe la distancia entre equipos UTP Ethernet de cobre a través de un enlace de fibra óptica
- ⦿ Ampliación de fibra multimodo a multimodo o multimodo a monomodo hasta 160 km!
- ⦿ Extender una red Ethernet sobre cable cobre o coaxial hasta 3000m.



www.perlesystems.es



SBA FOR MICROSOFT SKYPE FOR BUSINESS



- › Up to 1000 Skype for Business users
- › TCM connectivity (T1/ BRI/FXO)
- › SBC capability, up to 250 sessions
- › Support emergency calling standards

SESSION BORDER CONTROLLER



- › Certified for Microsoft Skype for Business
- › High scalability, from 5 to 24K sessions
- › Wide ITSP and PBX interoperability

CLOUDBOND 365



- › Full Skype for Business UC in one box
- › Up to 5000 users
- › Gateway TCM/SBC
- › Office 365 connector

TELÉFONO HOSPITALITY IP DECT



- › Fully compliant with many vendors
- › 1 Master – 6 slaves DECT configuration
- › Customized High End Faceplate

TELÉFONO HOSPITALITY ANALÓGICO DECT



- › Up to 10 programmable Guest room keys
- › Message Waiting & ring indicator
- › Redial, Hold & Volume control
- › Customized High End Faceplate

SISTEMA VÍDEO CONFERENCIA



- › 16 built-in microphones
- › HDMI output 1080p
- › Supports Google Docs, Dropbox
- › Interoperable with many vendors

TELÉFONOS IP / SIP / SKYPE FOR BUSINESS



- › SIP/MINET protocols compliant
- › WiFi / DECT solutions
- › Embedded gigabit switch
- › Fully compliant with Skype for Business

PLATAFORMA COMUNICACIONES



- › Mitel Appliance, server o VMWare
- › Up to 5.000.000 extensions
- › Hybrid IP and analog appliances

CONTACT CENTER



- › Scalable, from 5 agents
- › IVR routing
- › Multimedia Contact Center
- › Remote Agents

COLABORACIÓN • MiCOLLAB



- › Unified messaging
- › Audio, web and video conferencing
- › Softphone on PC and mobile (teleworker)
- › Installable on server, VMware and Hyper-V

MOVILIDAD



- › Remote Teleworker solution
- › Full access to all office system without VPNs
- › Secure 128 bit AES encryption



Scan this QR and get extra info about this products

Amplíe información escaneando este QR

ELECTRONIC ASSEMBLY

new display design

Intelligente PCAP Touch Panels

- I²C, SPI, RS-232
- 4,3" und 7"
- PCAP Touch Panels
- Handschuhgeeignet
- Grafik-/ Touchfunktionen
- Ready to Run
- USB Evaluation Kits

INTELLIGENTE TFTs KAPAZITIVE TOUCH PANELS



ELECTRONIC ASSEMBLY GmbH • www.lcd-module.de
Fon: +49 (0)8105/778090 • vertrieb@lcd-module.de

**MULTICHIP BRIDGELUX VERO****FAMILIA VERO**

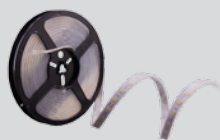
- › Holder integrado y 4 LES. 480 a 19.400 lm
- › Eficiencia: 130lm/W. 2SDCM
- › CRI: 70, 80, 90 ó 97
- › Garantía 10 años

MULTICHIP BRIDGELUX FAMILIA V**FAMILIA V**

- › 4 LES. 350 a 6.500 lm
- › Eficiencia: 130lm/W. 3SDCM
- › CRI: 70, 80 ó 90
- › Garantía 5 años

MÓDULO SEMIACABADO PARA LUMINARIAS**MÓDULO OLM BRIDGELUX**

- › Integra leds y lentes para luminarias de exterior. IP66
- › Eficiencia: 118lm/W
- › De 2.100 a 4.500lm
- › CRI: 70 u 80
- › Garantía 5 años

TIRAS DE LED**BOBINAS DE 5M**

- › De 30 a 204 leds/m
- › De 4,8 a 28,8w/m
- › CRI: 80, 90 ó 94
- › Varios blancos, color o RGB
- › IP20 hasta IP68.

FUENTES DE ALIMENTACIÓN IP20**AC-DC DE TENSIÓN CONSTANTE**

- › Entrada universal 88-264VAC
- › Potencias: 15W y 3.000W
- › PFC en algunos modelos
- › Normativas CE, UL, cUL, TUV y CB

FUENTES DE ALIMENTACIÓN IP67**AC-DC DE TENSIÓN CONSTANTE**

- › Tensión constante. 20W a 150W
- › Entrada 100-240VAC
- › Protecciones: SCP, OVP, OCP
- › Clase II

PERFILES ALUMINIO PARA TIRAS LED**PERFIL ESQUINA LISO 19MM DE LADO**

- › Varias medidas y formas.
- › Instalación: superficie, empotrados, suspendidos, etc.
- › Aluminio anodizado y tapa PMMA: opaca, translúcida o transparente.

DRIVERS PARA EXTERIOR**DRIVER CORRIENTE PARA LEDS**

- › Corriente constante. IP67 y rango 60 a 500W
- › PFC Activo (0.99 típico). Eficiencia: 95%
- › Versiones ajustables, multicanales y regulación
- › Protecciones: SCP, OVP, OCP y SP (6kV)
- › Garantía 5 años

DRIVERS PARA INTERIOR**DRIVER CORRIENTE PARA LEDS**

- › Corriente constante. IP20 y rango 10 a 72W
- › PFC activo y alta eficiencia.
- › Versiones ajustables, multicanal y regulación
- › Protecciones OVP, SCP, OTP y SP
- › Garantía 5 años

CONTROLADORES RGB**CONTROLADOR RGB**

- › Variedad de señales e interfaces/protocolos
- › Adaptación automática a la tensión de entrada
- › Potencias de 72W/canal a 288W/canal. 3 canales
- › Funciones en memoria en algunos modelos

REGULADORES LED MONOCOLOR**DIMMER CON MANDO**

- › Dimmers para regular la intensidad de luz
- › Disponibles en versiones de 12Vdc y 220 Vac
- › Diversas interfaces



Scan this QR and get extra info about this products

Amplíe información escaneando este código QR



www.matrix.es

BARCELONA

Ctra. Rubí a Sabadell km 13
Nave 109, Oficinas 6-9
08191 Rubí (Barcelona)

Tel.: 902 198 146
Fax: 902 995 414

LISBOA

Av. Coronel Eduardo
Galhardo, 7, 1º C
1170-105 Lisboa

Tel.: +351 218 162 625
Fax: +351 218 149 482

BILBAO

Pol. Aliendalde 11, Oficina 2G
48200 Durango (Vizcaya)

Tel.: 902 198 146
Fax: 902 995 414

MADRID

C/ Alejandro Sánchez, 109
28019 Madrid

Tel.: 902 198 146 / +34 915 602 737
Fax: 902 995 414 / +34 915 652 865

VALENCIA

Museros (Valencia)

Tel.: 902 198 146
Fax: 902 995 414

SEVILLA

Tel.: 902 198 146
Fax: 902 995 414